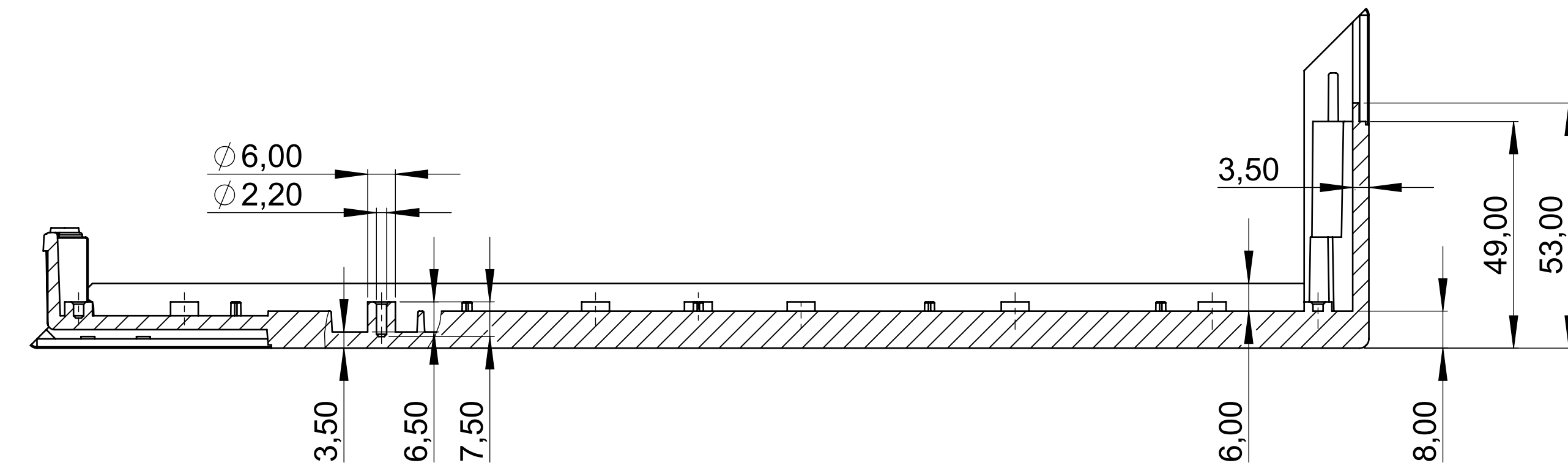
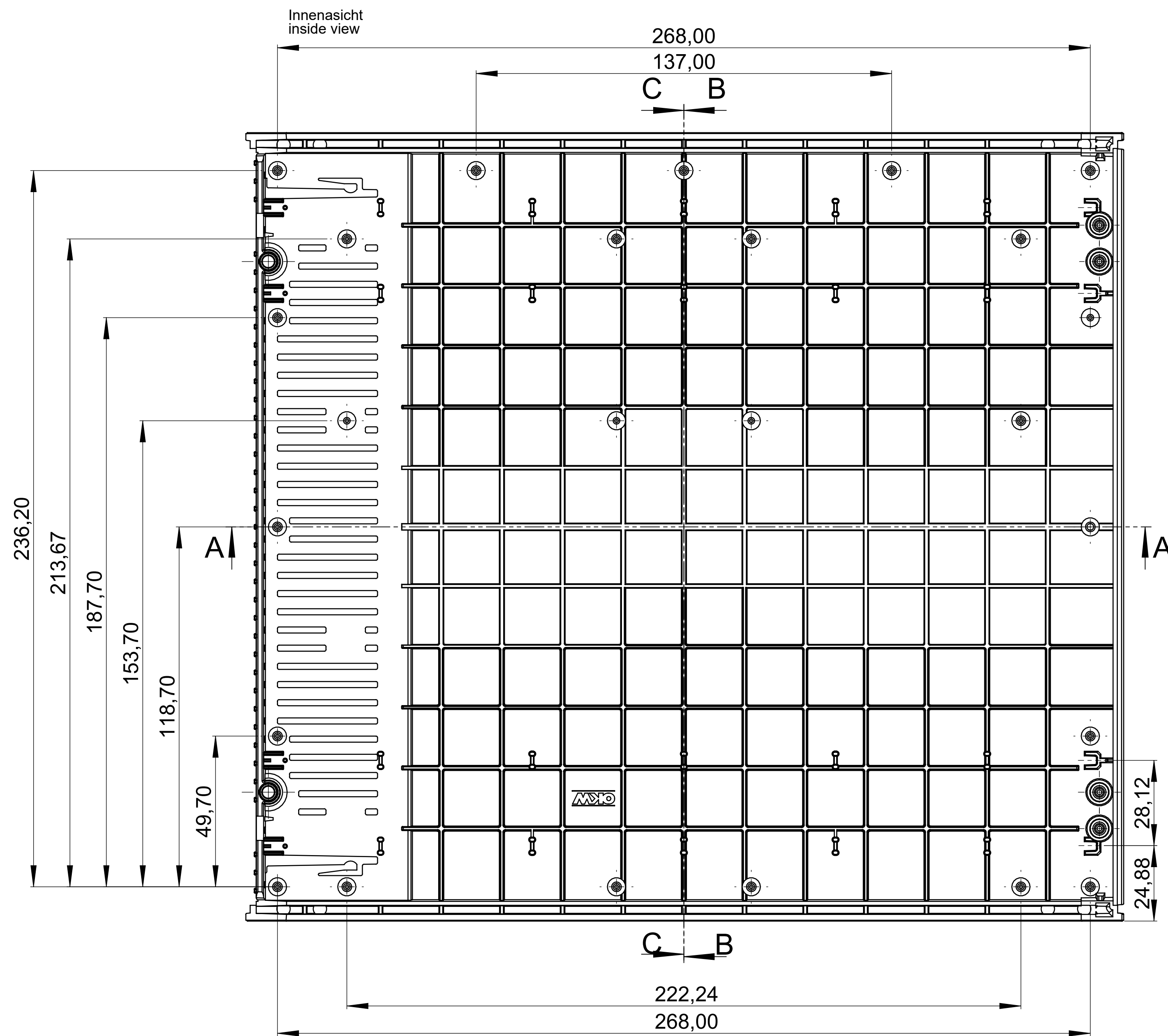
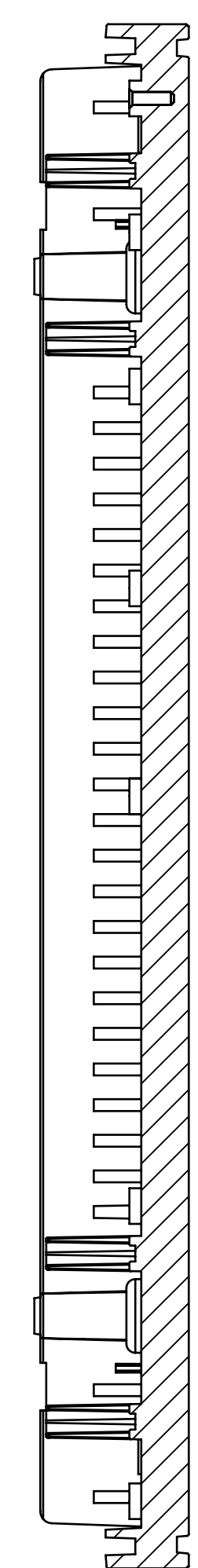


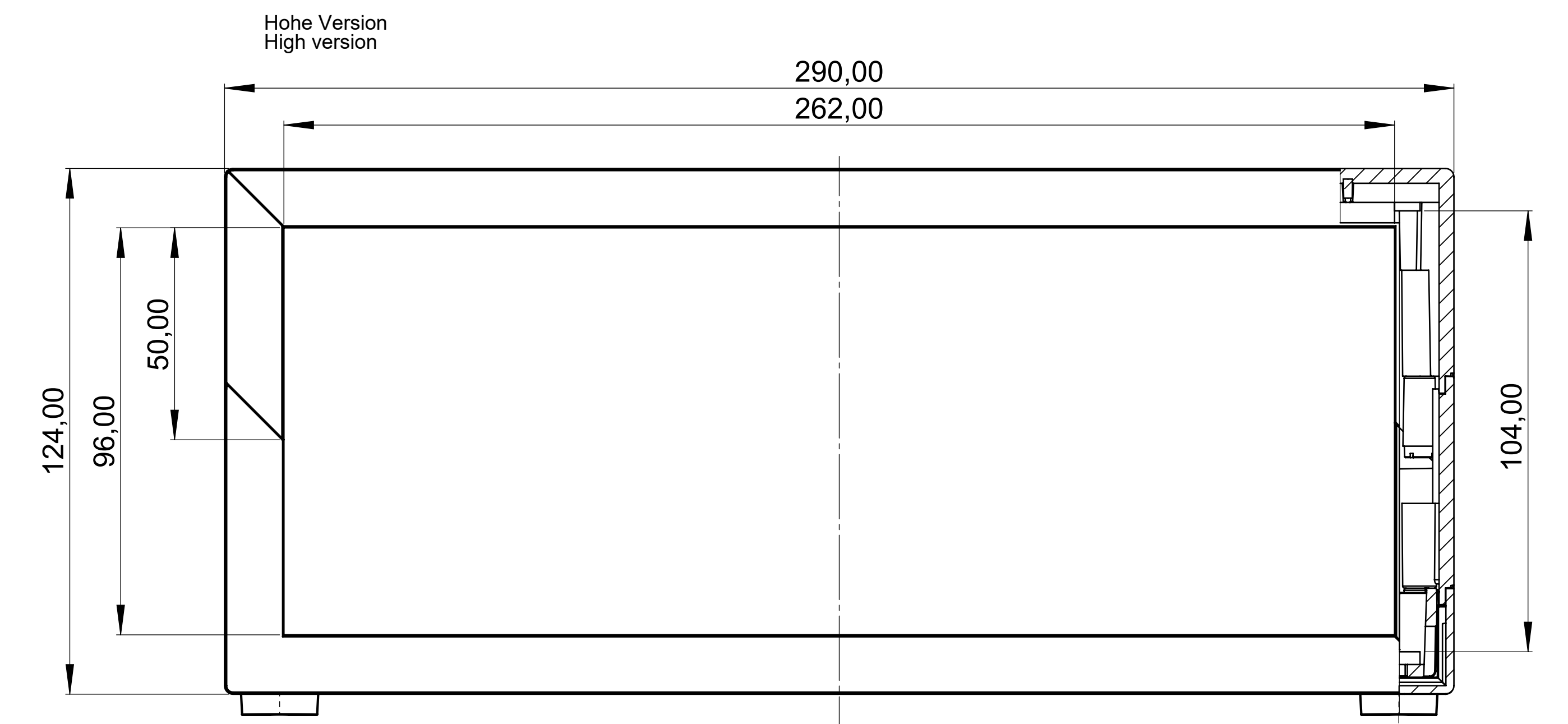
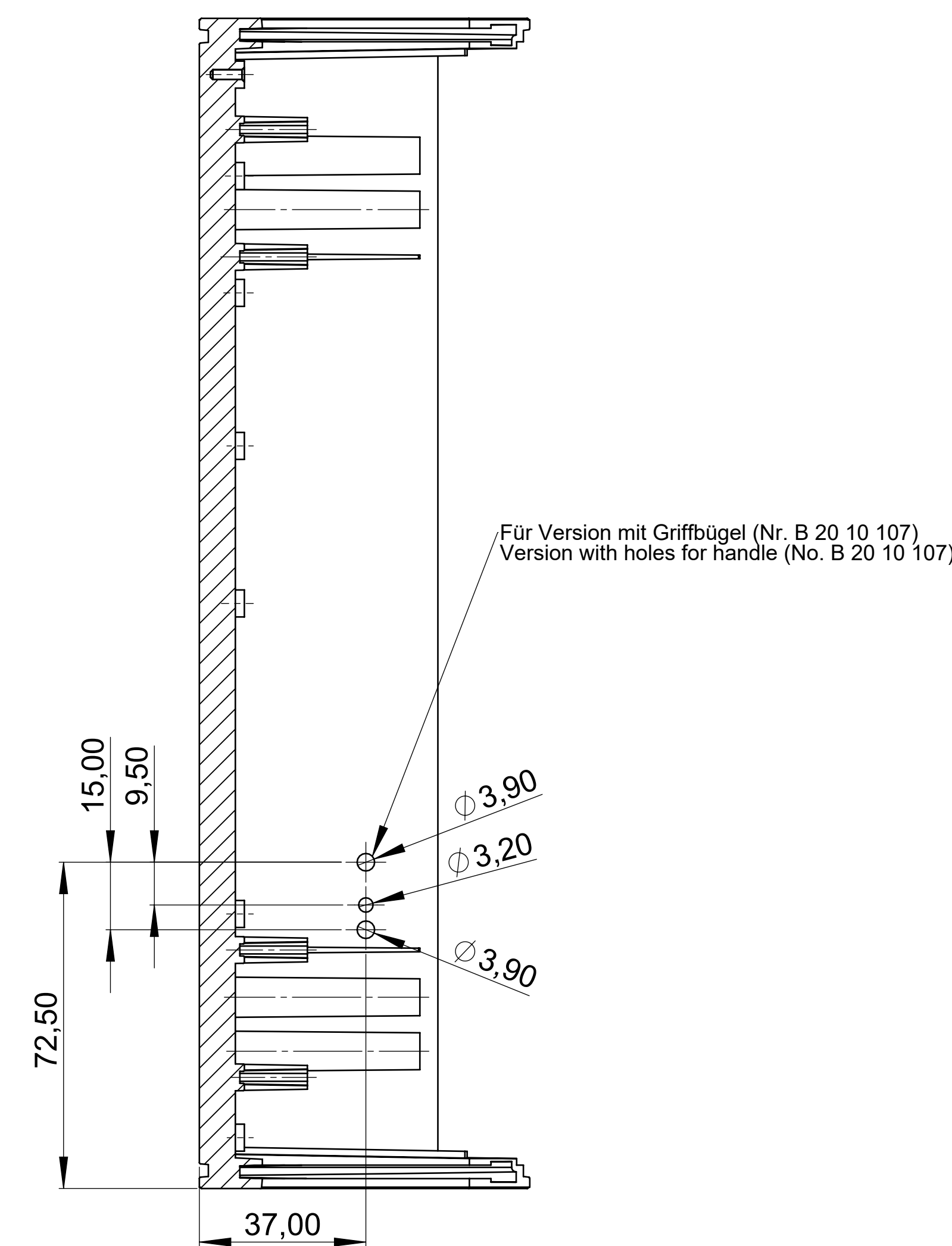
Schnitt A-A



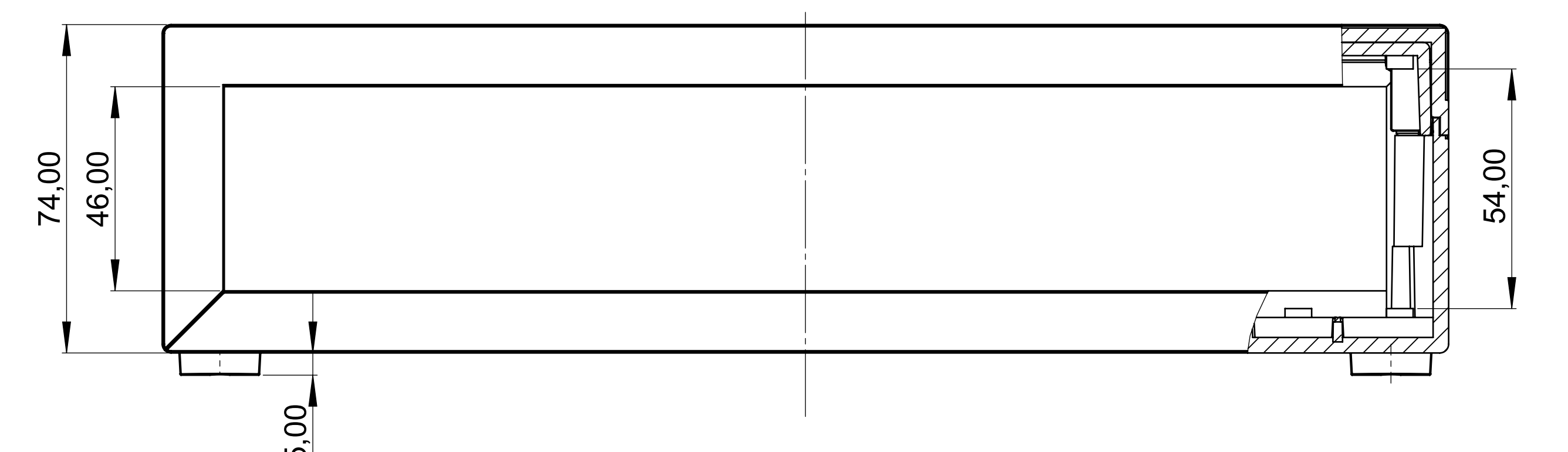
Schnitt B-B



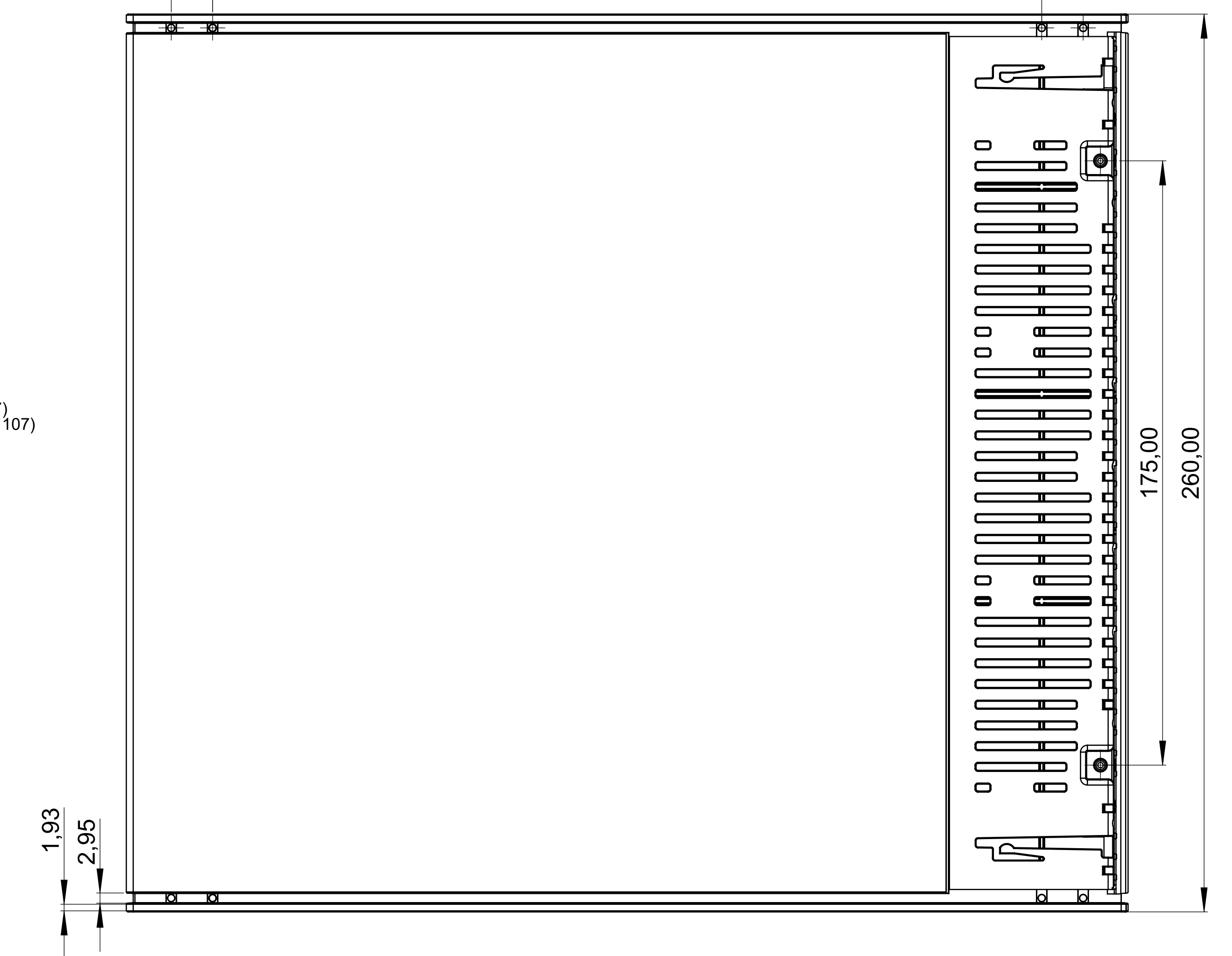
Schnitt C-C



Flache Version  
Flat version



12,00 240,00



Bitte die Maße an aktuellen Teilen abnehmen. Diese unterliegen material- und produktionsspezifischen Fertigungstoleranzen. Please take the dimensions from current parts. These are subject to material and manufacturing-specific tolerances.	Informationskopie wird nicht aktualisiert. Copy for information will not be updated.	Erst am: 24.01.2023 Erst von: J. Farnkopf Frage von: Revision: 01	Titelname: DIN 16091 1330 Volumen: Zuordnung: ÄNDERUNG	Status: ENTWICKLUNG Zeichnung: DIN 6 Teil 2
			OKW GEHÄUSE SYSTEME MEDITEC D220 D 220 komplett B2210*	M 1:1

max. Platinegröße: 260x 245mm (Domaussparung unberücksichtigt)  
max. size of PCB: 260x 245mm (cutouts for pillars not taken into consideration)