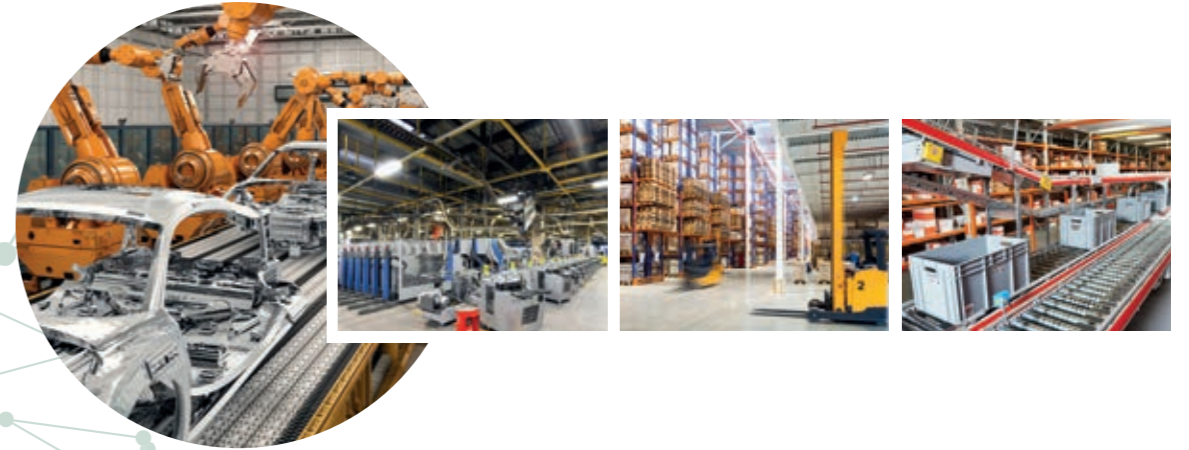




SMART ENCLOSURES FOR SMART INDUSTRY



OKW
GEHÄUSE
SYSTEME



INTELLIGENT ENCLOSURE TECHNOLOGY FOR THE DIGITAL FACTORY

IIoT technology (Industrial Internet of Things) or Industry 4.0 consists mainly in controlling production processes, constantly monitoring them and identifying potential for improvement. Sensors and sensor data play a central role, providing the data basis for automation and self-learning machines.

IIoT devices are of high quality and are equipped with sensitive, precise sensors. Of course, this also places special demands on the „packaging“ of the most diverse sensor technologies. OKW enclosures are optimally designed for applications in the smart factory: they are available as mobile variants, wearable enclosures, as wall-mounted or table-top versions, robust, sealed, in different sizes and versions, and with a comprehensive range of accessories.



LOGISTIK 4.0 / SMART LOGISTICS

Intelligent technologies are not only making their way into the world of manufacturing and production, but also into logistics. Systems are being developed, especially in the transport sector, in internal warehousing and for the analysis of material flows, to move material automatically, supply production autonomously and make transport routes more efficient. Modern communication, tracking and identification technologies play an important part here.

INTO A SMARTER FUTURE WITH SMART ENCLOSURES



EASYTEC

Enclosure range with external lugs for quick wall mounting or attachment to tubes / round profiles.

Page 6



Page 7

SMART-CONTROL

Designed for easy installation in 90° inside corners or on flat surfaces



Page 9

SMART-PANEL

Slim enclosure design, prepared for mounting on standard flush-mounted / cavity wall boxes



Page 10

PROTEC

Square basic shape with ergonomically inclined operating panel and plenty of installation volume



Page 11

SMART-TERMINAL

Robust and elegant enclosure range. Individual lengths of the aluminium profiles are available on request



Page 12

SMART-BOX

Modern enclosure range with high protection class up to IP66 for robust applications



Page 13

IN-BOX

High protection class of IP66 / IP67 and impact resistance of IK07 / IK08. Also available with transparent top part



Page 14

BODY-CASE

Enclosure for components and sensors that are worn on the body or close to the body



Page 15

SOFT-CASE

Large display area, can be used universally as a hand-held, table-top or wall-mounted enclosure



Page 16

RAILTEC B

This enclosure range allows simple and quick snap-in mounting on DIN rails in accordance with EN 60715 TH35



Page 17

RAILTEC C

Comprehensive range of enclosures for DIN EN 60715 rail mounting as well as for direct wall mounting



Page 18-21

CUSTOMISING

We can process and finish our enclosures according to your wishes and needs

Page 22-23

STANDARD RANGE

Here you will find a brief overview of the complete OKW product range

NET-BOX

Robust wall-mounted enclosure for modern central control units and gateways.

Page 8





EASYTEC

6

FLANGED ENCLOSURE FOR MODERN SENSOR APPLICATIONS

The new EASYTEC range of wall-mounted enclosures has been optimally designed for the integration of smart sensors for the IIoT (Industrial Internet of Things) and the IoT.

The bottom part has 2 lugs for quick wall mounting or for installation on pipes and profiles.

YOUR ADVANTAGES

- Modern enclosure design with a high degree of stability
- Four sizes – 80 and 100 as well as two new sizes 125/150, each in 2 heights
- Flame-retardant material ASA+PC-FR and optional protection class IP 65 (seals as accessory) for robust indoor and outdoor applications
- Sealed electronics compartment with two PCB levels (in the top/bottom parts)
- Screw connection with stainless steel screws and Torx drive

DIM. IN MM

Types	L* x W x H
80, Vers. I	101 x 50 x 22
80, Vers. II	101 x 50 x 26
100, Vers. I	121 x 62 x 26
100, Vers. II	121 x 62 x 31

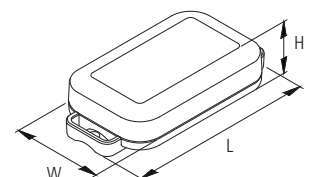
*length with lugs

NEW SIZES AVAILABLE FROM 14.09.2021



Types	L* x W x H
125, Vers. I	147 x 78 x 30
125, Vers. II	147 x 78 x 37
150, Vers. I	172 x 93 x 36
150, Vers. II	172 x 93 x 46

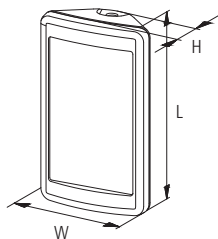
*length with lugs





DIM. IN MM

Types	L x W x H
S	142 x 81 x 46
M	173 x 101 x 59



SMART-CONTROL

THE ENCLOSURE FOR ANY CORNER

SMART-CONTROL is our first standard enclosure for easy installation in room corners. In addition, this enclosure range can be used both on an the wall and on a desk at an ergonomically inclined angle.

Special wall suspension element (accessory) for mounting the enclosure in 90° inside corners or on flat surfaces.

Desktop stand set (accessory) ensures reliable desktop positioning and an ergonomic reading angle of 45° when the enclosure is set up horizontally.

YOUR ADVANTAGES

- 2 sizes, M and S – convex version or version with recessed operating area for membrane keypads
- High-quality ASA+PC-FR material with high UV protection in the standard colour off-white (RAL 9002)
- Optional seal (accessory) for IP 55
- Screwed together on the rear of the enclosure using Torx stainless steel screws
- PCB mounting positions in the top and bottom parts

Order data, drawings and 3D models on the web under www.okw.com



NET-BOX

8

WALL MOUNT ENCLOSURES FOR CONTROL UNITS

NET-BOX plastic enclosures have a slim design and stylish curved top section, making these modern and elegant housings perfect for wall mounted control units, network nodes and much more.

Simple three-part assembly – bottom part, front cover and front lid; there are no visible screws on the front, just two on the underside of the lid. Optional infill covers close the underside opening and can be used for fitting additional PCBs or assemblies.

YOUR ADVANTAGES

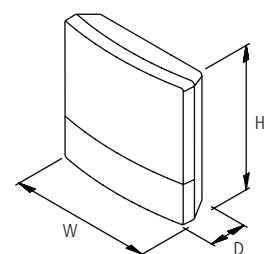
- Three sizes with plenty of room for electronics and interfaces
- The cases are moulded in flame retardant material and can be sealed to IP 65
- Supplied with anti-tamper Torx T10 assembly screws
- Optional infill covers close the underside opening and can be used for fitting additional PCBs or assemblies
- NET-BOX cases can also be used as desktop units, accessory non-slip feet are available

DIM. IN MM

Types	W x H x D
140	140 x 140 x 46.5
180	180 x 180 x 48.5
220	220 x 220 x 50.5

WALL-MOUNTING

Three point wall mounting system – no need to open the main electronics section, only the front lid has to be refitted after installation (version II already has openings in the bottom part).



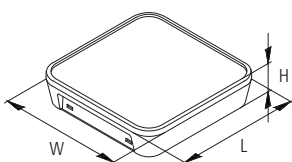


DIM. IN MM

Types	L x W x H
S84	84 x 84 x 21
E155	155 x 84 x 21

GLASS PANEL

Accessory glass panel fits onto top part and is designed for premium applications, e.g. for use with touch-screens, displays etc. Rear printing possible on request.



Order data, drawings and 3D models on the web under www.okw.com

SMART-PANEL

ELEGANT WALL-MOUNTED ENCLOSURE FOR MODERN CONTROL UNITS

SMART-PANEL is specifically designed for today's intelligent building control and monitoring technology. The elegant appearance fits seamlessly into modern residential, commercial and industrial environments.

Rational, screwless enclosure assembly with snap-in function – this is a major advantage for subsequent servicing activities on site.

YOUR ADVANTAGES

- Slim enclosure design in 2 sizes
- Bottom part prepared for installation on standard flush-mounted/cavity wall boxes
- High-quality V0 ASA+PC-FR material in traffic white (RAL 9016)
- Great looking – bottom part highly polished, top part with fine surface structure
- Flat, recessed area in one end for USB and Mini-USB connectors etc. as well as for opening the enclosure by means of a separate opening tool (in pairs as accessories)



PROTEC

10

SQUARE CONTROL CENTRE

PROTEC enclosures have a modern and highly attractive square design with soft contours.

Three sizes in the following versions:

Version I – With a deep recessed interface area at the rear of the enclosure for the installation and protection of connectors, interfaces etc.

Version II – with a snap-on cover for flush covering of the recessed interface area.

Version III – with a deep cover for the recessed interface area which is fitted by screws. The deep cover provides additional internal space for the electronics, cabling and connections.

YOUR ADVANTAGES

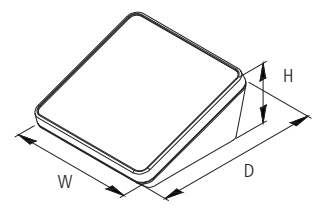
- High-quality V-0 material in off-white and optional IP 65 protection class (seal as an accessory) for tough applications
- Recessed operating area for protecting a membrane keypad
- Sealed electronics compartment with three board levels; plenty of space for the components and assemblies
- No visible fixings screws, all fixings hidden on the underside
- Concealed, flush wall mounting with removal prevention feature (accessory wall suspension element)

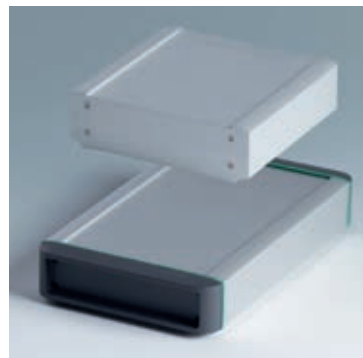
DIM. IN MM

Types	B x T x H
140	140 x 140 x 76
180	180 x 180 x 92
220	220 x 220 x 108

OPERATE

- Front operating panel ergonomically inclined by 20°
- Plenty of space for touch screens
 PROTEC 140: 5.7"/14.5 cm
 PROTEC 180: 7"/17.8 cm
 PROTEC 220: 8.4"/21.3 cm





DIM. IN MM

Types	L x W x H
160	202 x 170 x 50 ^{*1}
160	164 x 170 x 50 ^{*2}
200	242 x 170 x 50 ^{*1}
200	204 x 170 x 50 ^{*2}
240	282 x 170 x 50 ^{*1}
240	244 x 170 x 50 ^{*2}

^{*1} with side covers

^{*2} with aluminium end plate

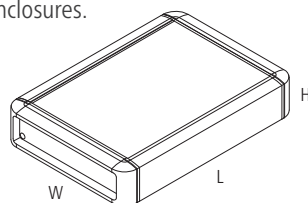
SPECIAL SIZES AND VERSIONS

Individual profile lengths to customer specification, minimum order quantity 100 pcs. on request, designer seals and covers in other colours as creative/visual features, minimum order quantity 200 pcs.

SMART-TERMINAL

ALUMINIUM PROFILE ENCLOSURES FOR CENTRAL CONTROL UNITS

Our new SMART-TERMINAL aluminium profile enclosures feature a highly quality matt anodised finish. These robust, elegant and highly attractive cases offer plenty of space for large-volume electronic assemblies, for example touch screens, display modules, PCBs etc. A variety of technical advantages, individual profile lengths on request, and creative designer options make the SMART-TERMINAL the last word in excellence for tough industrial display enclosures.



YOUR ADVANTAGES

- 3 basic enclosures in the profile lengths 160 mm, 200 mm and 240 mm
- Covers in lava (similar to anthracite) moulded in high-quality ASA+PC-FR plastic; designer seals made of TPV material in volcano or green
- Optionally available with a simple aluminium plate as a lateral end plate
- Side covers with recessed area to protect the cables and connectors
- Horizontal PCB guides and screw channels inside the enclosure
- Optional accessories: wall suspension element, case canting kit for an ergonomic reading angle of 12°



SMART-BOX

ADVANCED IP 66 PLASTIC ENCLOSURES

The rounded ergonomic design of the SMART-BOX series is designed to enhance the visual impact and tactile quality of your industrial electronics.

Convincing design; hinged flush-fitting trims hide all the case fixings.

Universal use for wall mount and desktop applications – screw shafts for wall mounting hidden under the hinged trims.

YOUR ADVANTAGES

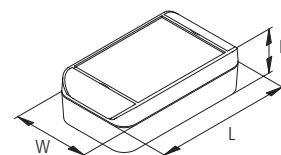
- High-quality material ASA+PC (UL 94 V-0) for use in tough conditions; also flame-retardant and self-extinguishing
- high protection class IP 66 (width 90/110/130/150), IP 65 (width 170) ; with pre-fitted sealing gaskets in the top
- high-quality A2 stainless steel alloy screws with high corrosion resistance – even against aggressive substances
- recessed operating area for protecting a membrane keypad; additional surface for labels on the underside

DIM. IN MM

Length	Width	Height
120	90	50
160		
140	110	60
200		
160	130	60
220		
180	150	60
280		
	170	60

ACCESSORIES

Case feet for desktop application, safety lock to prevent unauthorised access, security kit, cable grommet and pressure equalisation elements.





DIM. IN MM

Length	Width	Height
84	82	55/85
122	82	55/85
124	122	55/85
162	82	55/85
162	122	90
202	122	75/90
202	152	90
252	162	90/120
302	232	90/110

ACCESSORIES

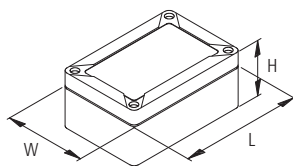
Security kit for use with lead tags, internal hinge kit, cable grommet, pressure equalisation elements, wall-mounting brackets, mounting plates and DIN rails.

IN-BOX

TOUGH INDUSTRIAL ENCLOSURES

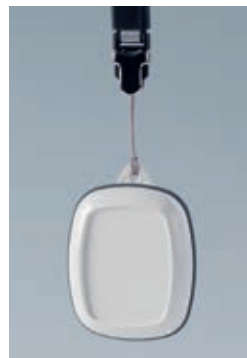
As enclosures for terminal installations, as well as for electronics equipment, the IN-BOX series offers versatile options for electrical and electronics engineers.

Two standard materials: ABS (UL 94 HB) or PC (V-2); the complete enclosures in PC comply with fire safety standard UL 94 5V (better than V-0), although the material only has the classification V-2.



YOUR ADVANTAGES

- Nine base enclosures with high gloss surfaces and different heights
- High protection classes IP 66/67; sealing gasket pre-foamed in the top
- High impact strength IK07 (ABS) and IK08 (PC)
- Top parts in case colour or transparent
- Efficient quarter-turn lid screws in stainless steel
- Direct wall mounting or exterior wall mounting with wall mounting brackets; if required an internal hinge kit can be supplied as an accessory
- Recessed operating area for protecting a membrane keypad or decorative foil/label

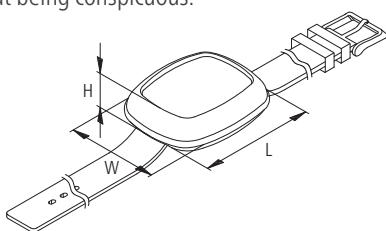


BODY-CASE

COMFORTABLE TO WEAR ON THE BODY

OKW's BODY-CASE is the new fully „wearable“ standard plastic enclosure. The design is perfect for so-called „wearable technologies“: on your arm, around your neck, clipped to a shirt or trouser pocket, or carried loose in an article of clothing.

Fulfils its function in the simplest way, without restricting the user in his or her activities and without being conspicuous.



YOUR ADVANTAGES

- Modern appearance with highly polished surfaces and a matt TPV sealing ring
- Moulded in ASA plastic with a high UV protection; colour traffic white (RAL 9016)
- Easy differentiation through the use of individual, exclusive watch straps
- Internal power supply with round or button cells which are mounted directly on the PCB – alternatively, the use of a rechargeable battery with receiving charging coils for charging the device inductively
- Top part with / without recessed surface for the protection of a decor foil or membrane keyboard

DIM. IN MM

Types	L x W x H
M	50 x 41 x 16
L	55 x 46 x 17
XL ^{*1}	62 x 56 x 17
XL ^{*2}	62 x 56 x 18

^{*1} with recessed surface
^{*2} without recessed surface

ACCESSORIES

Optional accessories, suitable for sizes L and M: wrist strap, eyelet/pocket clip kit, station etc.

Optional accessories, suitable for size XL: wrist strap and eyelet/pocket clip kit.



DIM. IN MM

Types	W x L x H
S	82 x 51 x 14
M	105 x 65 x 19
L	117 x 73 x 24
XL	150 x 92 x 28

ACCESSORIES

Intermediate rings in different materials and colours, combi-clip serves as a belt clip and/or wall suspension element, tilt foot bar for ergonomic canting on a desk, ring eyelet, strap eyelet (SOFT-CASE Version M)

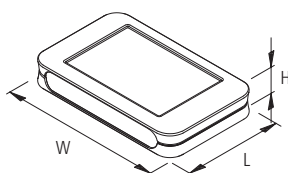
Order data, drawings and 3D models on the web under www.okw.com

SOFT-CASE

UNIVERSAL USE FOR HANDHELD, DESKTOP AND WALL MOUNT APPLICATIONS

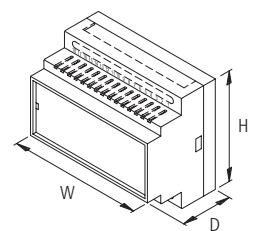
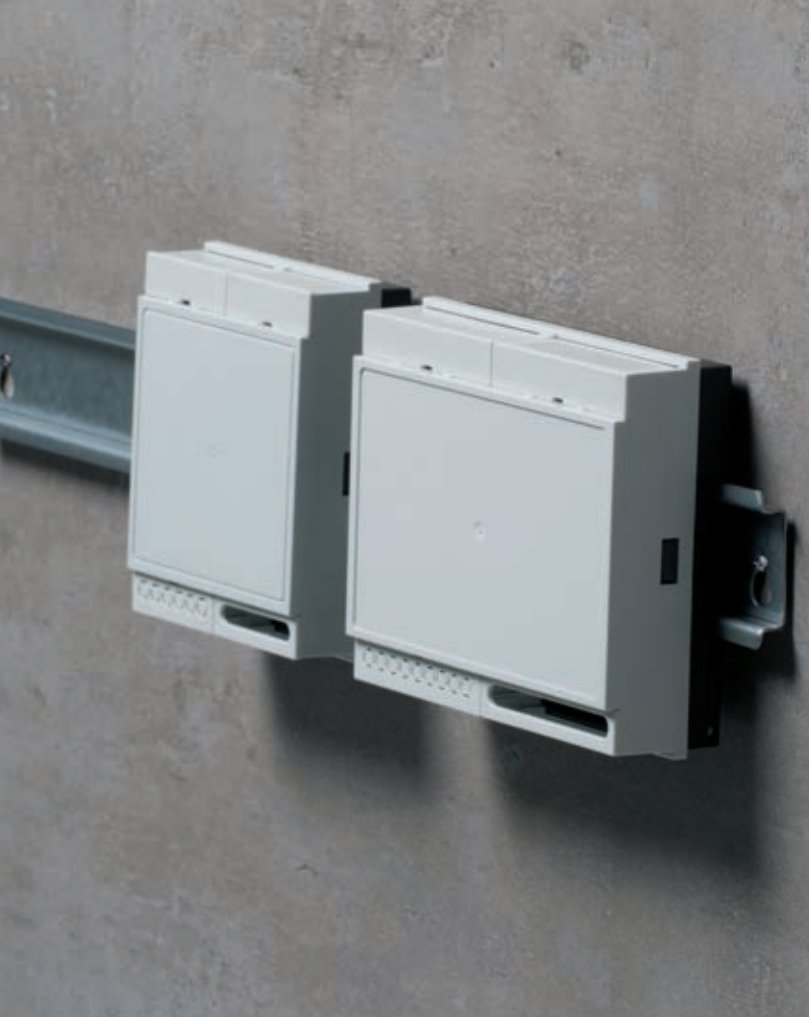
SOFT-CASE plastic enclosures convince design engineers, because they correspond with today's design and technology needs.

Unique "wide format" offers a generous interface area as well as sufficient room for larger displays, while also ensuring user comfort.



YOUR ADVANTAGES

- Four sizes – optional intermediate rings provide more installation height. Different versions: ABS/PMMA rings in case colour or chromated, soft TPE ring (colour volcano)
- Handy design with soft contours for a pleasant touch sensation
- Raised connector mounting panel on the wide edge to accommodate more connections
- Case material/colour: ABS (UL 94 HB) in off-white (RAL 9002) or lava (similar to anthracite), PMMA infra-red light-permeable in black (RAL 9005)
- Without/with battery compartment



DIM. IN MM

Types	W x H x D
2 modules	35 x 86/90 x 58
3 modules	52.5 x 86/90 x 58
4 modules	70 x 86/90 x 58
6 modules	105 x 86/90 x 58/59
9 modules	157 x 86/90 x 58/59
12 modules	210 x 90 x 58
2 mod. flat	35 x 90 x 31
4 mod. flat	70 x 90 x 31
6 mod. flat	105 x 90 x 31
9 mod. flat	157.5 x 90 x 31

VERSIONS

- for PCB terminal blocks 5.0/5.08 mm pitch
- for plug headers 5.0/5.08 mm pitch
- closed case for front connectors, D-SUB connectors, etc.
- for PCB terminal blocks 5.0/5.08 mm pitch (1 row)
- with knockout perforations 5.0 mm pitch
- open case for fitting different combinations

RAILTEC B

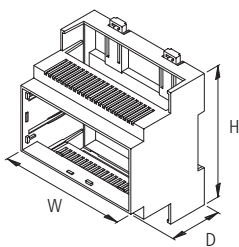
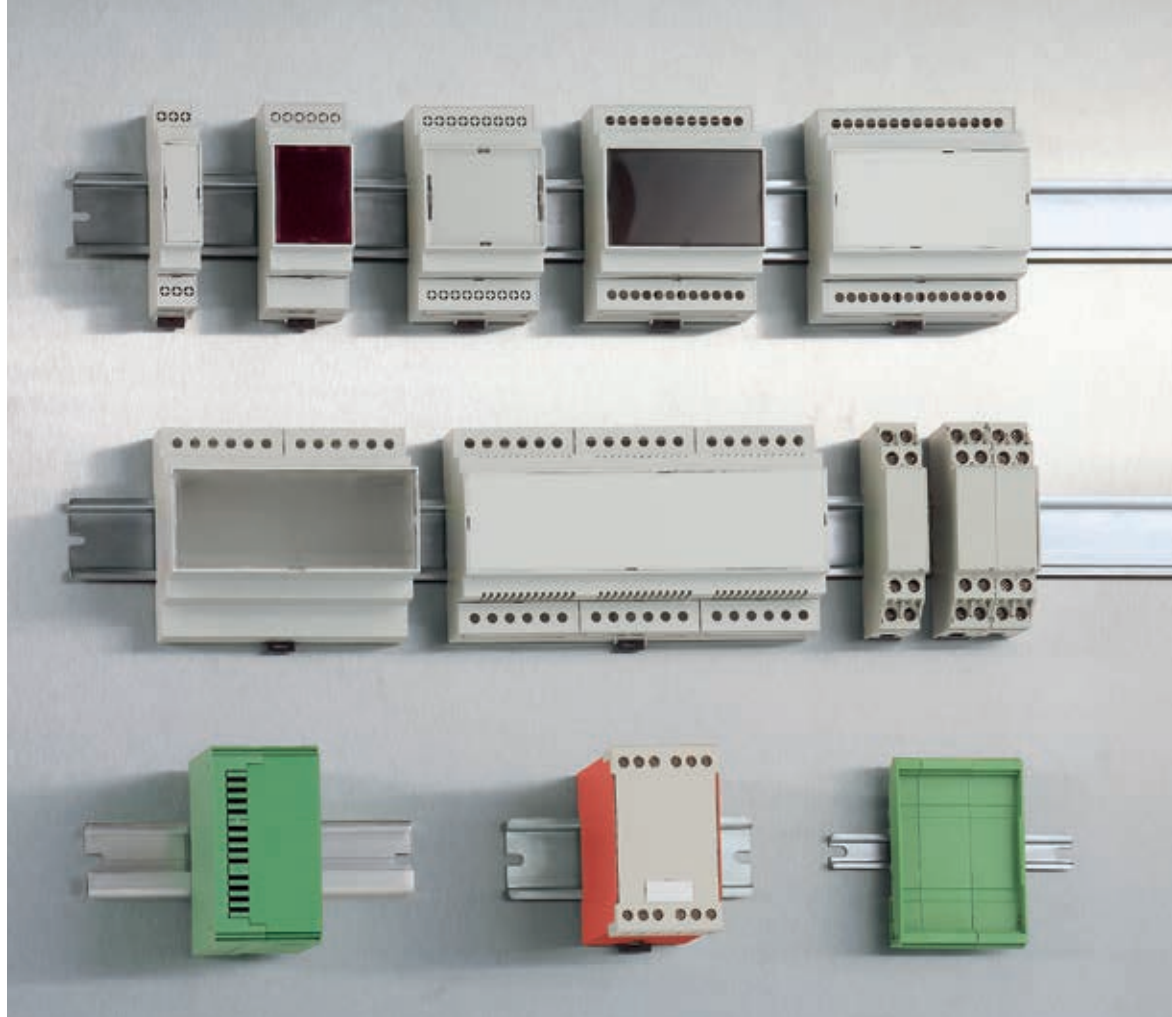
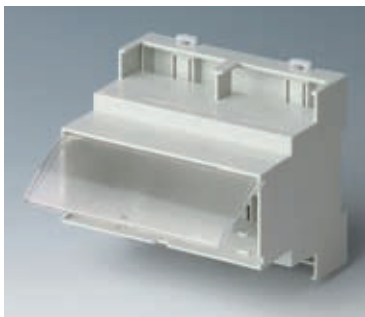
VERSATILE STANDARD DIN RAIL ENCLOSURES

Our RAILTEC B series of plastic enclosures provides fast and simple mounting on to standard DIN EN 60715 TH35 rails.

- Six sizes (2 to 12 modules wide) according to DIN 43880, unit 1
- Four sizes (2, 4, 6 and 9 modules wide) with low profile
- Four sizes (2, 4, 6 and 9 modules wide) with flat/high connection level
- Fully insulated and protected according to VBG 4 and IEC 529/DIN VDE 0470-1

YOUR ADVANTAGES

- KNX cover to fit 2 and 4 modules of series VI and flat top parts
- Suitable for DIN rails EN 60715 TH35 or direct wall mounting
- With/without ventilation slots for good heat dissipation
- Flexible assembly: PCB positioning in all 3 directions; base part with fixing pillars, top parts with guide ridges
- DIN rail clip pre-assembled in base part
- Transparent cover(acc.) protects display and operation elements



DIM. IN MM

Types	B x H x D
1 module	17.5 x 90 x 58
2 modules	36 x 90 x 58
3 modules	53 x 90 x 58
4 modules	71 x 90 x 58
5 modules	88 x 90 x 58
6 modules	106 x 90 x 58
	107 x 90 x 114
9 modules	160 x 90 x 58

VERSIONS

- front open, connection side with free through passage, without ventilation slots
- front open, connection side with free through passage, with ventilation slots
- front open, connection side with extended case wall, without ventilation slots
- front closed, connection side with free through passage, without ventilation slots



RAILTEC C

MODULAR DIN RAIL ENCLOSURES

Extensive range of DIN rail plastic enclosures for mounting on standard DIN EN 60715 rails, or for panel mounting. Also, open DIN rail PCB supports/holders for individual component mounting and simple replacement of the interfaces.

All types designed for fast installation of PCBs and terminals.

YOUR ADVANTAGES

- For PCB terminal blocks, plug headers and front connectors; optional frame for additional PCB position; front panels and lids in different versions; 1 to 12 module widths; for DIN rails EN 60715 TH35; PCB positioning in all 3 directions; adapter for TH15 and G32 rails (1 to 4 module models) as accessory
- Outstanding material properties for tough conditions, with high temperature stability (UL 94 V-0)
- Easy and fast assembly with snap-in installation of the enclosure parts

INDIVIDUALISATION ACCORDING TO YOUR VERY OWN WISHES

Look at our comprehensive standard range and select the enclosure that best matches your smart ideas, your components and the needs of your customers. In the next step you merely have to tell us what you still need for your own IIoT product. Together with you we choose the necessary modifications – ideal in terms of price, quality and delivery time – to meet your specific requirements.

EMC
SHIELDING

DECOR
FOILS

MACHINING

LASER
MARKING

ASSEMBLY

SPECIAL
MATERIAL

PRINTING

LACQUERING



CUSTOMISING

PRINTING

You can use printing on your product to give it a personal touch. It is also possible to indicate the function and usage. With precision craftsmanship, we can carry out the required printing to your satisfaction. Depending on the printing format and type of enclosure, we can offer you screen printing, tampon printing as well as digital printing.

LASER MARKING

Laser marking is ideal for individual labelling, identifying or marking. In particular, very small machine-readable markings, e.g. QR codes, barcodes, DataMatrix codes, consecutive numbering of individual parts and individual texts/logos can be carried out quickly and easily with laser marking.

EMC SHIELDING

When it is a question of EMC and the protection of your electronics from external interference as well as increased internal emission noise, OKW Gehäusesysteme is your competent partner. To shield plastic parts, which offer no natural protection against electromagnetic radiation, we coat the inside of the enclosure with aluminium.

SPECIAL MATERIAL

SPECIAL MATERIAL "INDIVIDUAL COLOURS"
On request we can also produce many of our enclosures in special colours. To match the colour you require, we can have the natural plastic material coloured and extruded to a high standard of reproduction. Individual colour adjustments are possible according to a sample, RAL or Pantone.

SPECIAL MATERIAL "V-0"
Manufacturing of enclosures in flame-resistant plastic material on request.

MACHINING

We can perform individual machining processes for you, quickly and reliably, for sample or series production quantities. You receive your enclosures ready-to-use, and only have to install the electronics.

Milling, tapping, engraving, drilling, countersinking and stamping - there is practically no limit to the variety of shapes and designs.

LACQUERING

We can lacquer the enclosures and tuning knobs in any colour you wish so that it matches your application or your company CI. For special requirements, such as for improving the feel of your product, for metallic effects or for protection from electrostatic discharge, OKW offers a wide choice of lacquers.

DEKOR FOILS

For lettering and colour design, we can digitally print decor foils quickly and easily for small batches starting with 1 unit. The digital printing process allows different versions without a great deal of trouble, e.g. in design, with consecutive numbering, codes and technical specifications. Colour gradations are also possible.

ASSEMBLY OF ACCESSORIES

We take over for you the assembly of enclosure accessories, e.g. cable glands, belt / pocket clips, tilt foot bars, wall mountings, hinges, handle bars and the application of keyboard foils, decor foils, type plates, display windows, mounting pillars etc. Also assembly and packaging to customer's specifications, e.g. seals, fibre optics etc.

THE COMPLETE PRODUCT RANGE



BODY-CASE



MINITEC



STYLE-CASE



SMART-CASE



SOFT-CASE



DATEC-POCKET-BOX



DATEC-MOBIL-BOX



DATEC-COMPACT



DATEC-CONTROL



HAND-TERMINAL



SENSO-CASE



CARRYTEC



ERGO-CASE



SLIM-CASE



CONNECT



SMART-PANEL



INTERFACE-TERMINAL



SMART-CONTROL



NET-BOX



DIATEC



EASYTEC



SMART-BOX



ROBUST-BOX



IN-BOX



SNAPTEC



PROTEC



COMTEC



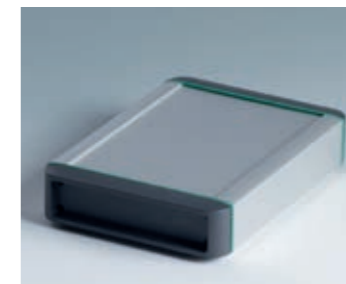
DESK CASES



DATEC-TERMINAL



UNITEC



SMART-TERMINAL



EVOTEC



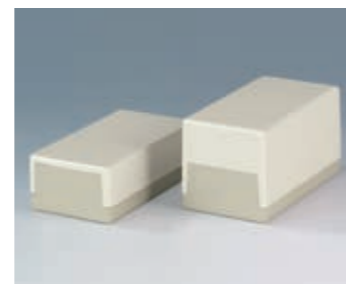
SHELL-TYPE CASES



TOPTec



SYNERGY



FLAT-PACK CASE



ART-CASE



MEDITEC



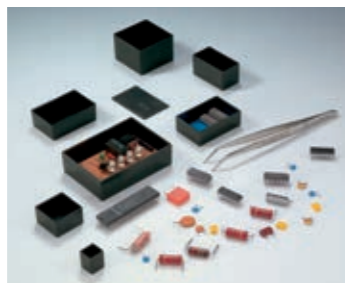
MOTEC



RAILTEC B



RAILTEC C



POTTING BOXES



TOP-KNOBS



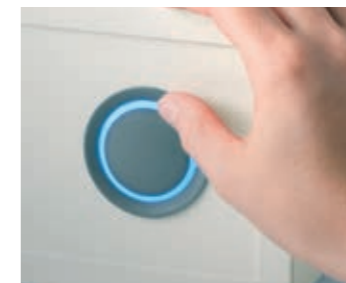
TUNING KNOBS ,CLASSIC'



COM-KNOBS



COMBINATION KNOBS



STAR-KNOBS



CONTROL-KNOBS



OKW
GEHÄUSE
SYSTEME

Odenwälder Kunststoffwerke
Gehäusesysteme GmbH
Friedrich-List-Str. 3
74722 Buchen, Germany
Tel. +49 (0) 62 81 | 404-00
EMail Info@okw.com
Web www.okw.com

