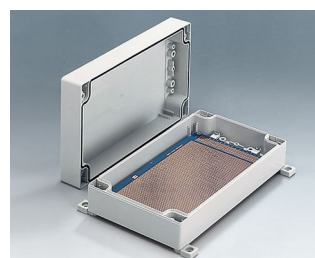
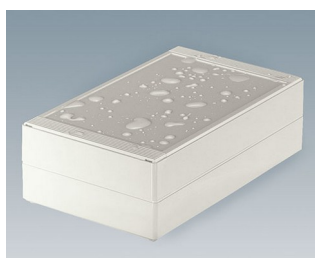
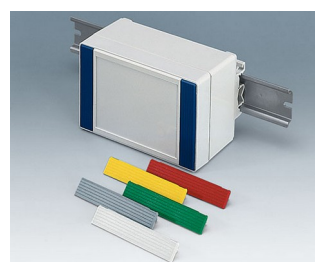
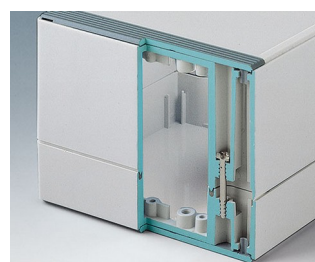


# ROBUST-BOX

## Sistema duale di contenitori con IP 66

Nella linea ROBUST-BOX entrambe le metà dei contenitori sono dotate di filetti preformati. Pertanto siete voi, in qualità di utilizzatori, a decidere se usare come parte inferiore la metà piatta o quella rialzata.

- Vasta scelta con 11 misure di base, altezze diverse e 2 materiali standard
- ABS (UL 94 HB), di provata validità come contenitore per il montaggio di morsetti
- PC (UL 94 HB), contenitore solido e robusto in grado di resistere a forti sollecitazioni e a temperature elevate
- Contenitori trasparenti alle radiofrequenze
- Utilizzabile come contenitore da scrivania, a muro o su guide DIN
- Facilità di montaggio; le singole metà del contenitore 'maschio e femmina' possono essere impiegate indifferentemente come parte superiore o inferiore
- Superficie di comando incavata a protezione della tastiera a membrana
- Fissaggio del coperchio al di fuori dell'area di tenuta e assicurato da viti imperdibili in acciaio inox
- Montaggio a muro diretto o mediante linguette di fissaggio esterne
- Pellicole di copertura colorate per la codifica (in alternativa alle versioni standard di colore grigio chiaro)
- Punti di fissaggio per schede e componenti di montaggio
- Numerosi accessori: piedini, cerniera, elementi di fissaggio alle guide DIN, supporto per schede per l'inserimento di moduli premontati ecc.



# ROBUST-BOX

## Esempi di applicazione

Impianti elettrici, ad es. nella tecnica di riscaldamento, condizionamento e ventilazione per apparecchi di controllo e di monitoraggio, nella realizzazione di sistemi di controllo e di impianti e dei sistemi di sicurezza. Ma è utilizzabile anche in ambito elettronico, ad es. come contenitore per tastiera, unità di controllo, sensori in interni ecc.



Fill level measurement in process technology



Heating Control



Humidity and temperature measuring unit



Measuring, regulating and metering unit for water quality



Portable metal detector



Robust monitoring systems



Sensor for air pollution



Stationary gas detection system

## Modifiche specifiche del cliente

Che caratteristiche deve avere il vostro prodotto personalizzato? Su richiesta vi forniamo i contenitori e manopole pronti per il montaggio e con tutte le modifiche e le caratteristiche specifiche.

Opzioni prodotto per Robust-Box



Lavorazione meccanica



Verniciatura



Stampa



Marcatura laser



Pellicole decorative



Materiale speciale



Protezione CEM



Confezionamento /  
montaggio

# ROBUST-BOX

## Versioni



**C0080801**  
Case shell 80, with groove  
ABS (UL 94 HB)  
light grey RAL 7035  
80x80x20mm



**C0080802**  
Case shell 80, with groove  
PC (UL 94 HB)  
light grey RAL 7035  
80x80x20mm



**C0081201**  
Case shell 80, with groove  
ABS (UL 94 HB)  
light grey RAL 7035  
120x80x20mm



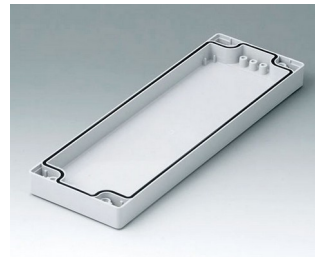
**C0081202**  
Case shell 80, with groove  
PC (UL 94 HB)  
light grey RAL 7035  
120x80x20mm



**C0081601**  
Case shell 80, with groove  
ABS (UL 94 HB)  
light grey RAL 7035  
160x80x20mm



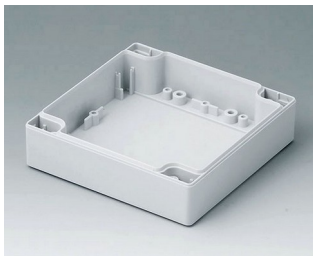
**C0081602**  
Case shell 80, with groove  
PC (UL 94 HB)  
light grey RAL 7035  
160x80x20mm



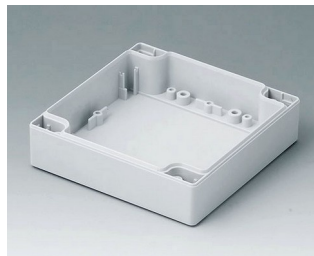
**C0082401**  
Case shell 80, with groove  
ABS (UL 94 HB)  
light grey RAL 7035  
240x80x20mm



**C0082402**  
Case shell 80, with groove  
PC (UL 94 HB)  
light grey RAL 7035  
240x80x20mm



**C0121201**  
Case shell 120, with tongue  
ABS (UL 94 HB)  
light grey RAL 7035  
120x120x30mm



**C0121202**  
Case shell 120, with tongue  
PC (UL 94 HB)  
light grey RAL 7035  
120x120x30mm



**C0122001**  
Case shell 120, with tongue  
ABS (UL 94 HB)  
light grey RAL 7035  
200x120x30mm



**C0122002**  
Case shell 120, with tongue  
PC (UL 94 HB)  
light grey RAL 7035  
200x120x30mm



**C0122401**  
Case shell 120, with tongue  
ABS (UL 94 HB)  
light grey RAL 7035  
240x120x30mm



**C0122402**  
Case shell 120, with tongue  
PC (UL 94 HB)  
light grey RAL 7035  
240x120x30mm



**C0161601**  
Case shell 160, with tongue  
ABS (UL 94 HB)  
light grey RAL 7035  
160x160x30mm



**C0161602**  
Case shell 160, with tongue  
PC (UL 94 HB)  
light grey RAL 7035  
160x160x30mm

# ROBUST-BOX



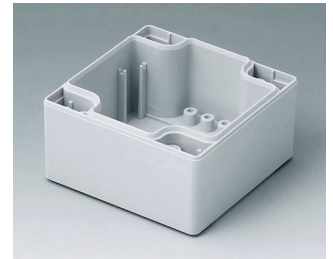
**C0162401**  
Case shell 160, with tongue  
ABS (UL 94 HB)  
light grey RAL 7035  
240x160x30mm



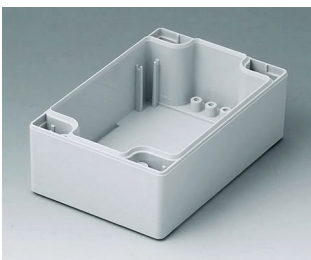
**C0162402**  
Case shell 160, with tongue  
PC (UL 94 HB)  
light grey RAL 7035  
240x160x30mm



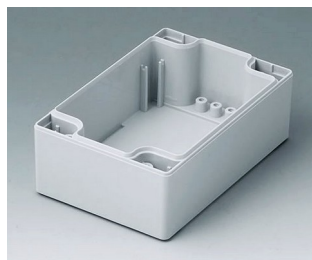
**C1080801**  
Case shell 80, with tongue  
ABS (UL 94 HB)  
light grey RAL 7035  
80x80x40mm



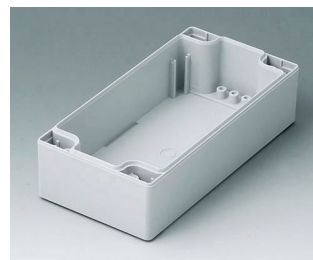
**C1080802**  
Case shell 80, with tongue  
PC (UL 94 HB)  
light grey RAL 7035  
80x80x40mm



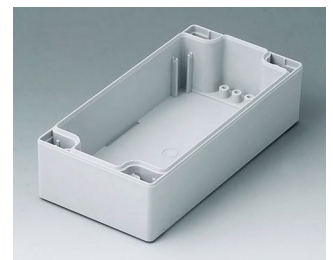
**C1081201**  
Case shell 80, with tongue  
ABS (UL 94 HB)  
light grey RAL 7035  
120x80x40mm



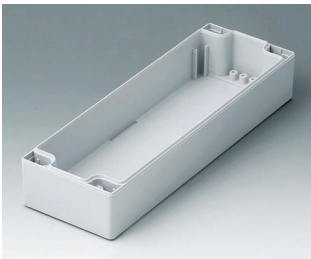
**C1081202**  
Case shell 80, with tongue  
PC (UL 94 HB)  
light grey RAL 7035  
120x80x40mm



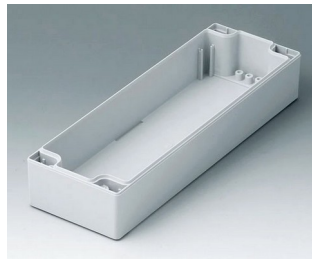
**C1081601**  
Case shell 80, with tongue  
ABS (UL 94 HB)  
light grey RAL 7035  
160x80x40mm



**C1081602**  
Case shell 80, with tongue  
PC (UL 94 HB)  
light grey RAL 7035  
160x80x40mm



**C1082401**  
Case shell 80, with tongue  
ABS (UL 94 HB)  
light grey RAL 7035  
240x80x40mm



**C1082402**  
Case shell 80, with tongue  
PC (UL 94 HB)  
light grey RAL 7035  
240x80x40mm



**C1121201**  
Case shell 120, with groove  
ABS (UL 94 HB)  
light grey RAL 7035  
120x120x30mm



**C1121202**  
Case shell 120, with groove  
PC (UL 94 HB)  
light grey RAL 7035  
120x120x30mm



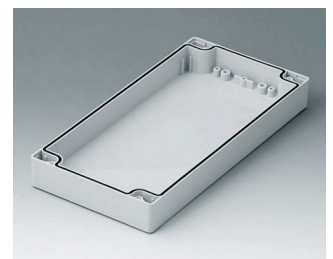
**C1122001**  
Case shell 120, with groove  
ABS (UL 94 HB)  
light grey RAL 7035  
200x120x30mm



**C1122002**  
Case shell 120, with groove  
PC (UL 94 HB)  
light grey RAL 7035  
200x120x30mm



**C1122401**  
Case shell 120, with groove  
ABS (UL 94 HB)  
light grey RAL 7035  
240x120x30mm



**C1122402**  
Case shell 120, with groove  
PC (UL 94 HB)  
light grey RAL 7035  
240x120x30mm

# ROBUST-BOX



**C1161601**  
Case shell 160, with groove  
ABS (UL 94 HB)  
light grey RAL 7035  
160x160x30mm



**C1161602**  
Case shell 160, with groove  
PC (UL 94 HB)  
light grey RAL 7035  
160x160x30mm



**C1162401**  
Case shell 160, with groove  
ABS (UL 94 HB)  
light grey RAL 7035  
240x160x30mm



**C1162402**  
Case shell 160, with groove  
PC (UL 94 HB)  
light grey RAL 7035  
240x160x30mm



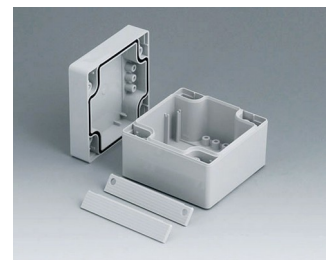
**C1203001**  
Case shell 200, with tongue  
ABS (UL 94 HB)  
light grey RAL 7035  
300x200x40mm



**C1243601**  
Case shell 240, with tongue  
ABS (UL 94 HB)  
light grey RAL 7035  
360x240x40mm



**C2008081**  
ROBUST-BOX WIDTH 80, Vers.  
I  
ABS (UL 94 HB)  
light grey RAL 7035  
80x80x60mm  
IP 66



**C2008082**  
ROBUST-BOX WIDTH 80, Vers.  
II  
PC (UL 94 HB)  
light grey RAL 7035  
80x80x60mm  
IP 66



**C2008121**  
ROBUST-BOX WIDTH 80, Vers.  
I  
ABS (UL 94 HB)  
light grey RAL 7035  
120x80x60mm  
IP 66



**C2008122**  
ROBUST-BOX WIDTH 80, Vers.  
II  
PC (UL 94 HB)  
light grey RAL 7035  
120x80x60mm  
IP 66



**C2008161**  
ROBUST-BOX WIDTH 80, Vers.  
I  
ABS (UL 94 HB)  
light grey RAL 7035  
160x80x60mm  
IP 66



**C2008162**  
ROBUST-BOX WIDTH 80, Vers.  
II  
PC (UL 94 HB)  
light grey RAL 7035  
160x80x60mm  
IP 66



**C2008241**  
ROBUST-BOX WIDTH 80, Vers.  
I  
ABS (UL 94 HB)  
light grey RAL 7035  
240x80x60mm  
IP 66



**C2008242**  
ROBUST-BOX WIDTH 80, Vers.  
II  
PC (UL 94 HB)  
light grey RAL 7035  
240x80x60mm  
IP 66



**C2012121**  
ROBUST-BOX WIDTH 120,  
Vers. I  
ABS (UL 94 HB)  
light grey RAL 7035  
120x120x60mm  
IP 66



**C2012122**  
ROBUST-BOX WIDTH 120,  
Vers. II  
PC (UL 94 HB)  
light grey RAL 7035  
120x120x60mm  
IP 66

# ROBUST-BOX



**C2012201**  
ROBUST-BOX WIDTH 120,  
Vers. I  
ABS (UL 94 HB)  
light grey RAL 7035  
200x120x60mm  
IP 66



**C2012202**  
ROBUST-BOX WIDTH 120,  
Vers. II  
PC (UL 94 HB)  
light grey RAL 7035  
200x120x60mm  
IP 66



**C2012241**  
ROBUST-BOX WIDTH 120,  
Vers. I  
ABS (UL 94 HB)  
light grey RAL 7035  
240x120x60mm  
IP 66



**C2012242**  
ROBUST-BOX WIDTH 120,  
Vers. II  
PC (UL 94 HB)  
light grey RAL 7035  
240x120x60mm  
IP 66



**C2016161**  
ROBUST-BOX WIDTH 160,  
Vers. I  
ABS (UL 94 HB)  
light grey RAL 7035  
160x160x60mm  
IP 66



**C2016162**  
ROBUST-BOX WIDTH 160,  
Vers. II  
PC (UL 94 HB)  
light grey RAL 7035  
160x160x60mm  
IP 66



**C2016241**  
ROBUST-BOX WIDTH 160,  
Vers. I  
ABS (UL 94 HB)  
light grey RAL 7035  
240x160x60mm  
IP 66



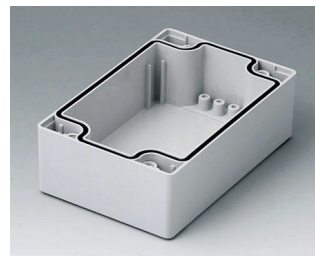
**C2016242**  
ROBUST-BOX WIDTH 160,  
Vers. II  
PC (UL 94 HB)  
light grey RAL 7035  
240x160x60mm  
IP 66



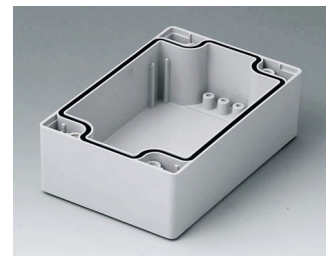
**C2080801**  
Case shell 80, with groove  
ABS (UL 94 HB)  
light grey RAL 7035  
80x80x40mm



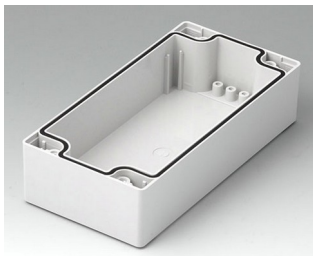
**C2080802**  
Case shell 80, with groove  
PC (UL 94 HB)  
light grey RAL 7035  
80x80x40mm



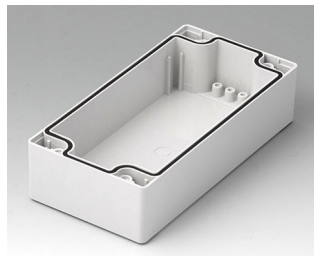
**C2081201**  
Case shell 80, with groove  
ABS (UL 94 HB)  
light grey RAL 7035  
120x80x40mm



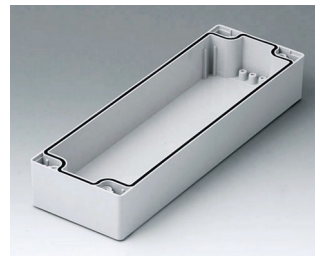
**C2081202**  
Case shell 80, with groove  
PC (UL 94 HB)  
light grey RAL 7035  
120x80x40mm



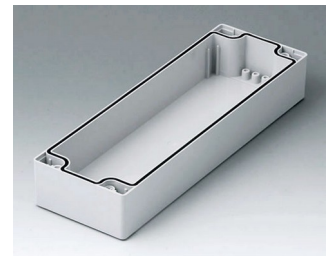
**C2081601**  
Case shell 80, with groove  
ABS (UL 94 HB)  
light grey RAL 7035  
160x80x40mm



**C2081602**  
Case shell 80, with groove  
PC (UL 94 HB)  
light grey RAL 7035  
160x80x40mm

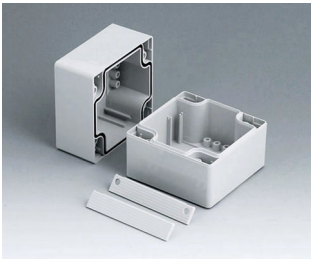


**C2082401**  
Case shell 80, with groove  
ABS (UL 94 HB)  
light grey RAL 7035  
240x80x40mm

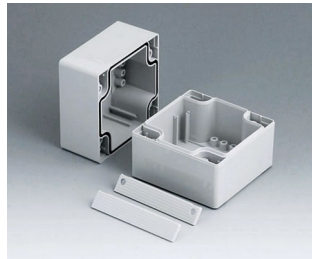


**C2082402**  
Case shell 80, with groove  
PC (UL 94 HB)  
light grey RAL 7035  
240x80x40mm

# ROBUST-BOX



**C2108081**  
ROBUST-BOX WIDTH 80, Vers. I  
ABS (UL 94 HB)  
light grey RAL 7035  
80x80x80mm  
IP 66



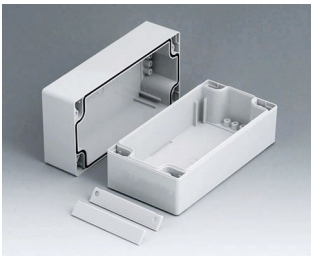
**C2108082**  
ROBUST-BOX WIDTH 80, Vers. II  
PC (UL 94 HB)  
light grey RAL 7035  
80x80x80mm  
IP 66



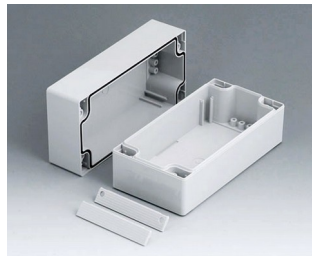
**C2108121**  
ROBUST-BOX WIDTH 80, Vers. I  
ABS (UL 94 HB)  
light grey RAL 7035  
120x80x80mm  
IP 66



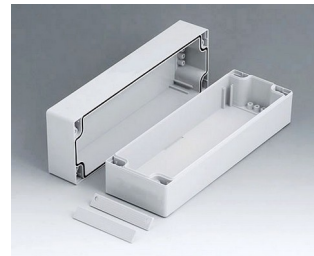
**C2108122**  
ROBUST-BOX WIDTH 80, Vers. II  
PC (UL 94 HB)  
light grey RAL 7035  
120x80x80mm  
IP 66



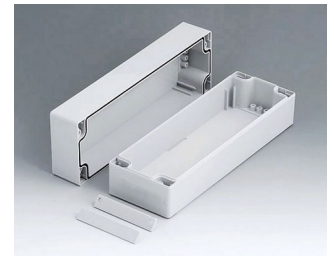
**C2108161**  
ROBUST-BOX WIDTH 80, Vers. I  
ABS (UL 94 HB)  
light grey RAL 7035  
160x80x80mm  
IP 66



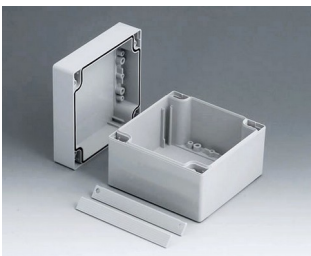
**C2108162**  
ROBUST-BOX WIDTH 80, Vers. II  
PC (UL 94 HB)  
light grey RAL 7035  
160x80x80mm  
IP 66



**C2108241**  
ROBUST-BOX WIDTH 80, Vers. I  
ABS (UL 94 HB)  
light grey RAL 7035  
240x80x80mm  
IP 66



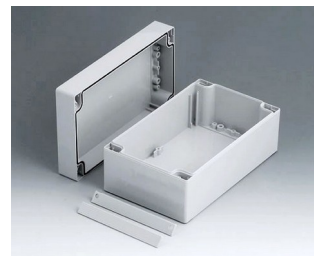
**C2108242**  
ROBUST-BOX WIDTH 80, Vers. II  
PC (UL 94 HB)  
light grey RAL 7035  
240x80x80mm  
IP 66



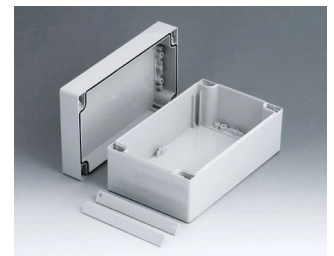
**C2112121**  
ROBUST-BOX WIDTH 120, Vers. I  
ABS (UL 94 HB)  
light grey RAL 7035  
120x120x90mm  
IP 66



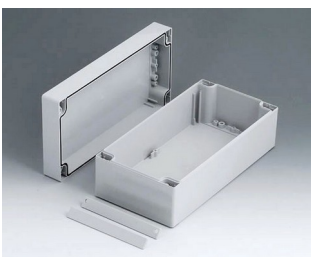
**C2112122**  
ROBUST-BOX WIDTH 120, Vers. II  
PC (UL 94 HB)  
light grey RAL 7035  
120x120x90mm  
IP 66



**C2112201**  
ROBUST-BOX WIDTH 120, Vers. I  
ABS (UL 94 HB)  
light grey RAL 7035  
200x120x90mm  
IP 66



**C2112202**  
ROBUST-BOX WIDTH 120, Vers. II  
PC (UL 94 HB)  
light grey RAL 7035  
200x120x90mm  
IP 66



**C2112241**  
ROBUST-BOX WIDTH 120, Vers. I  
ABS (UL 94 HB)  
light grey RAL 7035  
240x120x90mm  
IP 66



**C2112242**  
ROBUST-BOX WIDTH 120, Vers. II  
PC (UL 94 HB)  
light grey RAL 7035  
240x120x90mm  
IP 66



**C2116161**  
ROBUST-BOX WIDTH 160, Vers. I  
ABS (UL 94 HB)  
light grey RAL 7035  
160x160x90mm  
IP 66



**C2116162**  
ROBUST-BOX WIDTH 160, Vers. II  
PC (UL 94 HB)  
light grey RAL 7035  
160x160x90mm  
IP 66

# ROBUST-BOX



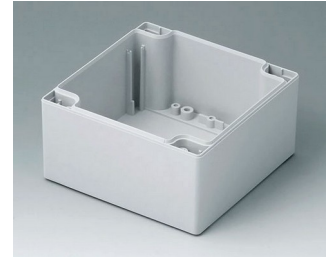
**C2116241**  
ROBUST-BOX WIDTH 160,  
Vers. I  
ABS (UL 94 HB)  
light grey RAL 7035  
240x160x90mm  
IP 66



**C2116242**  
ROBUST-BOX WIDTH 160,  
Vers. II  
PC (UL 94 HB)  
light grey RAL 7035  
240x160x90mm  
IP 66



**C2120301**  
ROBUST-BOX WIDTH 200,  
Vers. I  
ABS (UL 94 HB)  
light grey RAL 7035  
300x200x80mm  
IP 66



**C2121201**  
Case shell 120, with tongue  
ABS (UL 94 HB)  
light grey RAL 7035  
120x120x60mm



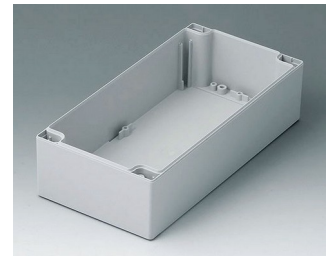
**C2121202**  
Case shell 120, with tongue  
PC (UL 94 HB)  
light grey RAL 7035  
120x120x60mm



**C2122001**  
Case shell 120, with tongue  
ABS (UL 94 HB)  
light grey RAL 7035  
200x120x60mm



**C2122002**  
Case shell 120, with tongue  
PC (UL 94 HB)  
light grey RAL 7035  
200x120x60mm



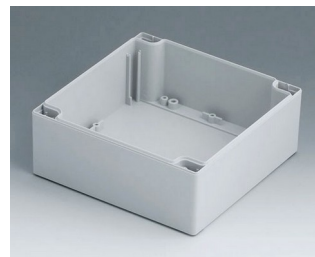
**C2122401**  
Case shell 120, with tongue  
ABS (UL 94 HB)  
light grey RAL 7035  
240x120x60mm



**C2122402**  
Case shell 120, with tongue  
PC (UL 94 HB)  
light grey RAL 7035  
240x120x60mm



**C2124361**  
ROBUST-BOX WIDTH 240,  
Vers. I  
ABS (UL 94 HB)  
light grey RAL 7035  
360x240x80mm  
IP 66



**C2161601**  
Case shell 160, with tongue  
ABS (UL 94 HB)  
light grey RAL 7035  
160x160x60mm



**C2161602**  
Case shell 160, with tongue  
PC (UL 94 HB)  
light grey RAL 7035  
160x160x60mm



**C2162401**  
Case shell 160, with tongue  
ABS (UL 94 HB)  
light grey RAL 7035  
240x160x60mm



**C2162402**  
Case shell 160, with tongue  
PC (UL 94 HB)  
light grey RAL 7035  
240x160x60mm



**C2203001**  
Case shell 200, with groove  
ABS (UL 94 HB)  
light grey RAL 7035  
300x200x40mm



**C2243601**  
Case shell 240, with groove  
ABS (UL 94 HB)  
light grey RAL 7035  
360x240x40mm

# ROBUST-BOX



**C2416241**  
ROBUST-BOX WIDTH 160,  
Vers. I  
ABS (UL 94 HB)  
light grey RAL 7035  
240x160x120mm  
IP 66



**C2416242**  
ROBUST-BOX WIDTH 160,  
Vers. II  
PC (UL 94 HB)  
light grey RAL 7035  
240x160x120mm  
IP 66



**C2420301**  
ROBUST-BOX WIDTH 200,  
Vers. I  
ABS (UL 94 HB)  
light grey RAL 7035  
300x200x120mm  
IP 66



**C2424361**  
ROBUST-BOX WIDTH 240,  
Vers. I  
ABS (UL 94 HB)  
light grey RAL 7035  
360x240x120mm  
IP 66



**C2520301**  
ROBUST-BOX WIDTH 200,  
Vers. I  
ABS (UL 94 HB)  
light grey RAL 7035  
300x200x160mm  
IP 66



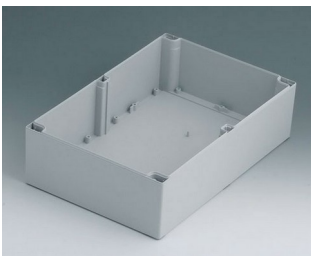
**C2524361**  
ROBUST-BOX WIDTH 240,  
Vers. I  
ABS (UL 94 HB)  
light grey RAL 7035  
360x240x160mm  
IP 66



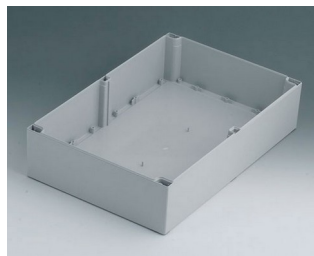
**C3162401**  
Case shell 160, with groove  
ABS (UL 94 HB)  
light grey RAL 7035  
240x160x60mm



**C3162402**  
Case shell 160, with groove  
PC (UL 94 HB)  
light grey RAL 7035  
240x160x60mm



**C4203001**  
Case shell 200, with tongue  
ABS (UL 94 HB)  
light grey RAL 7035  
300x200x80mm



**C4243601**  
Case shell 240, with tongue  
ABS (UL 94 HB)  
light grey RAL 7035  
360x240x80mm



**C5203001**  
Case shell 200, with groove  
ABS (UL 94 HB)  
light grey RAL 7035  
300x200x80mm



**C5243601**  
Case shell 240, with groove  
ABS (UL 94 HB)  
light grey RAL 7035  
360x240x80mm

## System components to complete



**C0080801**  
Case shell 80, with groove  
ABS (UL 94 HB)  
light grey RAL 7035  
80x80x20mm



**C0080802**  
Case shell 80, with groove  
PC (UL 94 HB)  
light grey RAL 7035  
80x80x20mm



**C0081201**  
Case shell 80, with groove  
ABS (UL 94 HB)  
light grey RAL 7035  
120x80x20mm



**C0081202**  
Case shell 80, with groove  
PC (UL 94 HB)  
light grey RAL 7035  
120x80x20mm

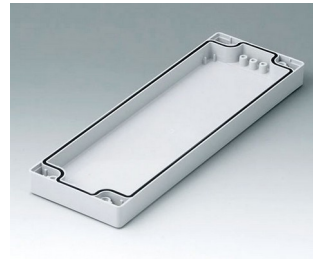
# ROBUST-BOX



**C0081601**  
Case shell 80, with groove  
ABS (UL 94 HB)  
light grey RAL 7035  
160x80x20mm



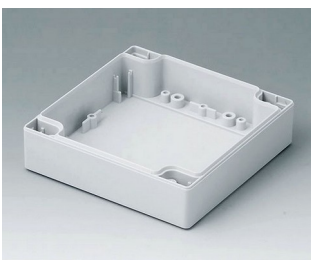
**C0081602**  
Case shell 80, with groove  
PC (UL 94 HB)  
light grey RAL 7035  
160x80x20mm



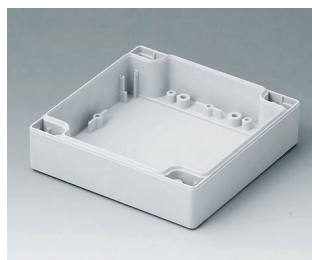
**C0082401**  
Case shell 80, with groove  
ABS (UL 94 HB)  
light grey RAL 7035  
240x80x20mm



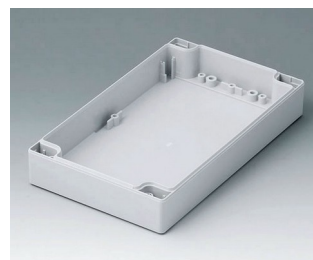
**C0082402**  
Case shell 80, with groove  
PC (UL 94 HB)  
light grey RAL 7035  
240x80x20mm



**C0121201**  
Case shell 120, with tongue  
ABS (UL 94 HB)  
light grey RAL 7035  
120x120x30mm



**C0121202**  
Case shell 120, with tongue  
PC (UL 94 HB)  
light grey RAL 7035  
120x120x30mm



**C0122001**  
Case shell 120, with tongue  
ABS (UL 94 HB)  
light grey RAL 7035  
200x120x30mm



**C0122002**  
Case shell 120, with tongue  
PC (UL 94 HB)  
light grey RAL 7035  
200x120x30mm



**C0122401**  
Case shell 120, with tongue  
ABS (UL 94 HB)  
light grey RAL 7035  
240x120x30mm



**C0122402**  
Case shell 120, with tongue  
PC (UL 94 HB)  
light grey RAL 7035  
240x120x30mm



**C0161601**  
Case shell 160, with tongue  
ABS (UL 94 HB)  
light grey RAL 7035  
160x160x30mm



**C0161602**  
Case shell 160, with tongue  
PC (UL 94 HB)  
light grey RAL 7035  
160x160x30mm



**C0162401**  
Case shell 160, with tongue  
ABS (UL 94 HB)  
light grey RAL 7035  
240x160x30mm



**C0162402**  
Case shell 160, with tongue  
PC (UL 94 HB)  
light grey RAL 7035  
240x160x30mm

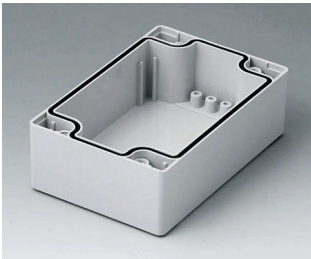


**C2080801**  
Case shell 80, with groove  
ABS (UL 94 HB)  
light grey RAL 7035  
80x80x40mm

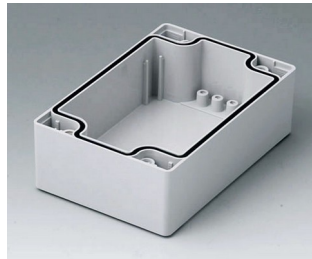


**C2080802**  
Case shell 80, with groove  
PC (UL 94 HB)  
light grey RAL 7035  
80x80x40mm

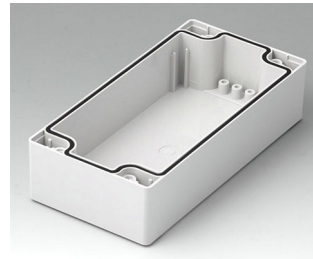
# ROBUST-BOX



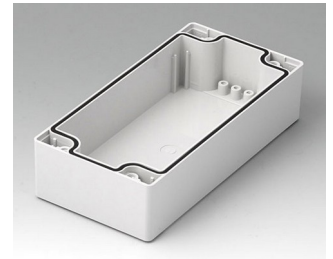
**C2081201**  
 Case shell 80, with groove  
 ABS (UL 94 HB)  
 light grey RAL 7035  
 120x80x40mm



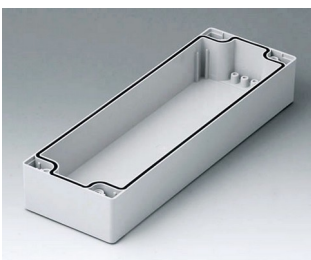
**C2081202**  
 Case shell 80, with groove  
 PC (UL 94 HB)  
 light grey RAL 7035  
 120x80x40mm



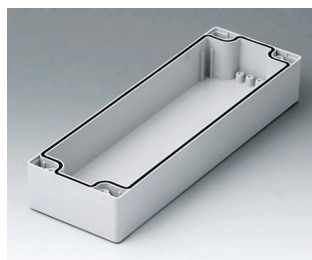
**C2081601**  
 Case shell 80, with groove  
 ABS (UL 94 HB)  
 light grey RAL 7035  
 160x80x40mm



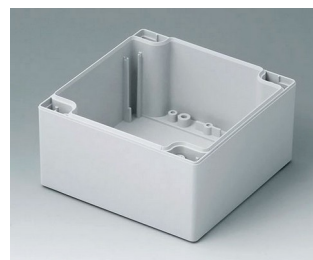
**C2081602**  
 Case shell 80, with groove  
 PC (UL 94 HB)  
 light grey RAL 7035  
 160x80x40mm



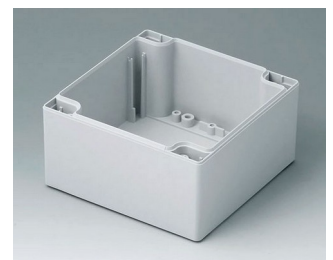
**C2082401**  
 Case shell 80, with groove  
 ABS (UL 94 HB)  
 light grey RAL 7035  
 240x80x40mm



**C2082402**  
 Case shell 80, with groove  
 PC (UL 94 HB)  
 light grey RAL 7035  
 240x80x40mm



**C2121201**  
 Case shell 120, with tongue  
 ABS (UL 94 HB)  
 light grey RAL 7035  
 120x120x60mm



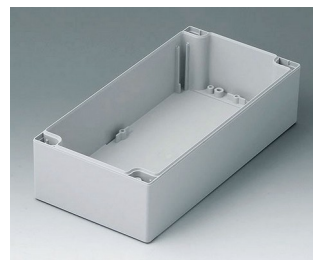
**C2121202**  
 Case shell 120, with tongue  
 PC (UL 94 HB)  
 light grey RAL 7035  
 120x120x60mm



**C2122001**  
 Case shell 120, with tongue  
 ABS (UL 94 HB)  
 light grey RAL 7035  
 200x120x60mm



**C2122002**  
 Case shell 120, with tongue  
 PC (UL 94 HB)  
 light grey RAL 7035  
 200x120x60mm



**C2122401**  
 Case shell 120, with tongue  
 ABS (UL 94 HB)  
 light grey RAL 7035  
 240x120x60mm



**C2122402**  
 Case shell 120, with tongue  
 PC (UL 94 HB)  
 light grey RAL 7035  
 240x120x60mm



**C2161601**  
 Case shell 160, with tongue  
 ABS (UL 94 HB)  
 light grey RAL 7035  
 160x160x60mm



**C2161602**  
 Case shell 160, with tongue  
 PC (UL 94 HB)  
 light grey RAL 7035  
 160x160x60mm



**C2162401**  
 Case shell 160, with tongue  
 ABS (UL 94 HB)  
 light grey RAL 7035  
 240x160x60mm



**C2162402**  
 Case shell 160, with tongue  
 PC (UL 94 HB)  
 light grey RAL 7035  
 240x160x60mm

# ROBUST-BOX



**C2203001**  
Case shell 200, with groove  
ABS (UL 94 HB)  
light grey RAL 7035  
300x200x40mm



**C2243601**  
Case shell 240, with groove  
ABS (UL 94 HB)  
light grey RAL 7035  
360x240x40mm



**C2299001**  
Assembly kit



**C2299002**  
Assembly kit



**C5203001**  
Case shell 200, with groove  
ABS (UL 94 HB)  
light grey RAL 7035  
300x200x80mm

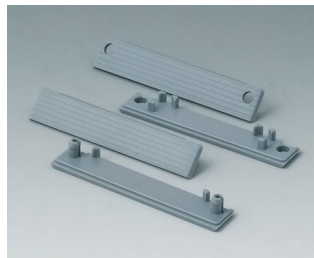


**C5243601**  
Case shell 240, with groove  
ABS (UL 94 HB)  
light grey RAL 7035  
360x240x80mm

## Accessory to complete



**C2200801**  
Cover strips 80, without holes  
PC (UL 94 HB)  
light grey RAL 7035



**C2201082**  
Cover strips 80  
PC (UL 94 HB)  
silver grey RAL 7001



**C2201084**  
Cover strips 80  
PC (UL 94 HB)  
red RAL 3020



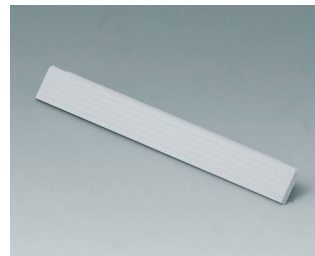
**C2201085**  
Cover strips 80  
PC (UL 94 HB)  
yellow RAL 1023



**C2201086**  
Cover strips 80  
PC (UL 94 HB)  
green RAL 6024



**C2201087**  
Cover strips 80  
PC (UL 94 HB)  
blue RAL 5017



**C2201201**  
Cover strips 120, without holes  
PC (UL 94 HB)  
light grey RAL 7035



**C2201601**  
Cover strips 160, without holes  
PC (UL 94 HB)  
light grey RAL 7035

# ROBUST-BOX



**C2202001**  
Cover strips 200, without holes  
PC (UL 94 HB)  
light grey RAL 7035



**C2202401**  
Cover strips 240, without holes  
PC (UL 94 HB)  
light grey RAL 7035



**C2203123**  
Cover strips 120  
PC (UL 94 HB)  
silver grey RAL 7001



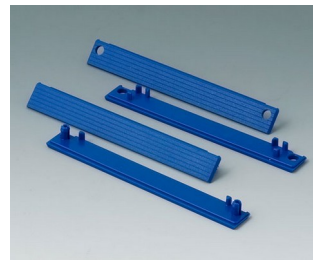
**C2203124**  
Cover strips 120  
PC (UL 94 HB)  
red RAL 3020



**C2203125**  
Cover strips 120  
PC (UL 94 HB)  
yellow RAL 1023



**C2203126**  
Cover strips 120  
PC (UL 94 HB)  
green RAL 6024



**C2203127**  
Cover strips 120  
PC (UL 94 HB)  
blue RAL 5017



**C2204162**  
Cover strips 160  
PC (UL 94 HB)  
silver grey RAL 7001



**C2204164**  
Cover strips 160  
PC (UL 94 HB)  
red RAL 3020



**C2204165**  
Cover strips 160  
PC (UL 94 HB)  
yellow RAL 1023



**C2204166**  
Cover strips 160  
PC (UL 94 HB)  
green RAL 6024



**C2204167**  
Cover strips 160  
PC (UL 94 HB)  
blue RAL 5017



**C2210801**  
Cover strips 80, with holes  
PC (UL 94 HB)  
light grey RAL 7035



**C2211201**  
Cover strips 120, with holes  
PC (UL 94 HB)  
light grey RAL 7035



**C2211601**  
Cover strips 160, with holes  
PC (UL 94 HB)  
light grey RAL 7035



**C2212001**  
Cover strips 200, with holes  
PC (UL 94 HB)  
light grey RAL 7035

# ROBUST-BOX



**C2212401**  
Cover strips 240, with holes  
PC (UL 94 HB)  
light grey RAL 7035

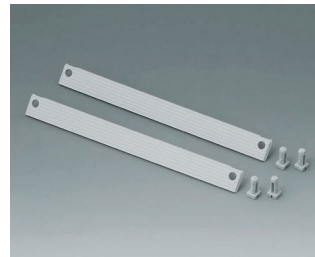
## Accessory "protection"



**C2299040**  
Security plug  
PA 6 (UL 94 HB)  
light grey RAL 7035



**C2299042**  
Security kit width 120  
PA 6 (UL 94 HB)  
light grey RAL 7035



**C2299046**  
Security kit width 160  
PA 6 (UL 94 HB)  
light grey RAL 7035



**C2299048**  
Security kit width 80  
PA 6 (UL 94 HB)  
light grey RAL 7035



**C2306917**  
Pressure equalisation element  
M6x0.75  
PA 6 (UL 94 HB)  
light grey RAL 7035  
IP 56



**C2310917**  
Pressure equalisation element  
M10x1  
PA 6 (UL 94 HB)  
light grey RAL 7035  
IP 56

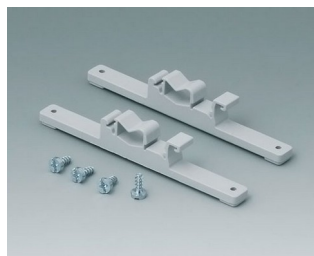


**C2320137**  
Cable grommet  
EPDM  
light grey RAL 7035  
IP 67

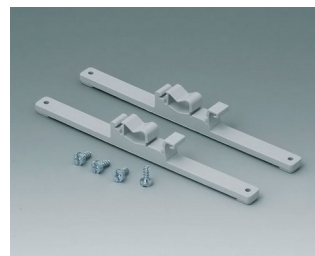
## Accessory "wall/holder"



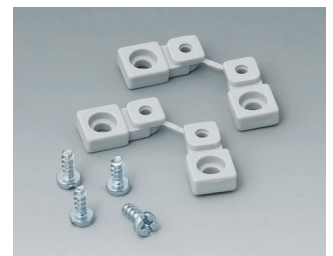
**C2201088**  
Fastening elements to DIN-Rails  
PA 6  
light grey RAL 7035



**C2203128**  
Fastening elements to DIN-Rails  
PA 6  
light grey RAL 7035



**C2204168**  
Fastening elements to DIN-Rails  
PA 6  
light grey RAL 7035



**C2299028**  
Wall mounting brackets  
PA 6 (UL 94 HB)  
light grey RAL 7035

# ROBUST-BOX



**C2299031**  
Securing hinge for the cover  
PP  
natural-coloured



**C2299088**  
Hinge  
PA 6  
light grey RAL 7035

## Accessory "screws"



**A0306031**  
Self-tapping screws 3 x 6 mm  
(PZ1)

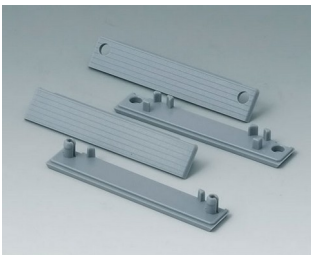


**A0308031**  
Self-tapping screws 3 x 8 mm  
(PZ1)



**A0308132**  
Self-tapping screw 3 x 8 mm  
(T10)  
Stainless steel

## Accessory



**C2201082**  
Cover strips 80  
PC (UL 94 HB)  
silver grey RAL 7001



**C2201084**  
Cover strips 80  
PC (UL 94 HB)  
red RAL 3020



**C2201085**  
Cover strips 80  
PC (UL 94 HB)  
yellow RAL 1023



**C2201086**  
Cover strips 80  
PC (UL 94 HB)  
green RAL 6024



**C2201087**  
Cover strips 80  
PC (UL 94 HB)  
blue RAL 5017



**C2203123**  
Cover strips 120  
PC (UL 94 HB)  
silver grey RAL 7001



**C2203124**  
Cover strips 120  
PC (UL 94 HB)  
red RAL 3020

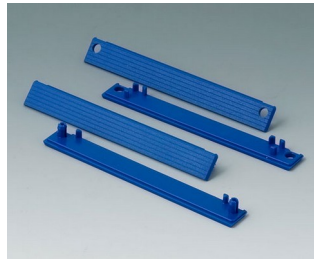


**C2203125**  
Cover strips 120  
PC (UL 94 HB)  
yellow RAL 1023

# ROBUST-BOX



**C2203126**  
Cover strips 120  
PC (UL 94 HB)  
green RAL 6024



**C2203127**  
Cover strips 120  
PC (UL 94 HB)  
blue RAL 5017



**C2204162**  
Cover strips 160  
PC (UL 94 HB)  
silver grey RAL 7001



**C2204164**  
Cover strips 160  
PC (UL 94 HB)  
red RAL 3020



**C2204165**  
Cover strips 160  
PC (UL 94 HB)  
yellow RAL 1023



**C2204166**  
Cover strips 160  
PC (UL 94 HB)  
green RAL 6024



**C2204167**  
Cover strips 160  
PC (UL 94 HB)  
blue RAL 5017



**C2299018**  
Case feet  
TPE (UL 94 HB)



**C2299058**  
PCB support  
PC (UL 94 HB)  
light grey RAL 7035



**C2299068**  
PCB support  
PC (UL 94 HB)  
light grey RAL 7035

Salvo modifiche tecniche. © OKW Gehäusesysteme, Buchen/Germania.