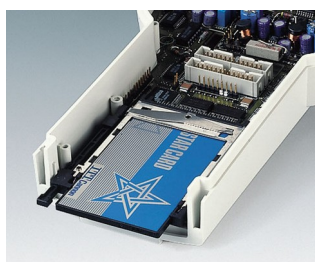
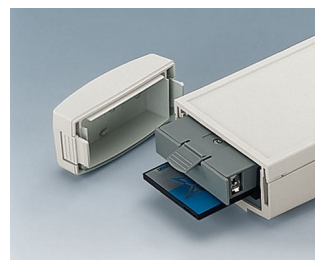


# DATEC-CONTROL

## Contenitori per applicazioni mobili con display di grandi dimensioni

La forma rotonda della testa nella serie dei contenitori per applicazioni mobili DATEC-CONTROL permette l'integrazione di display grafici più grandi che offrono un maggiore comfort agli utilizzatori.

- Integrazione di display grafici standardizzati
- Particolarmente pratico da usare grazie all'impugnatura di piccole dimensioni
- Grado di protezione elevato: IP 65 (XS, S) o IP 54 (M, L) con l'impiego di set di guarnizioni e delle lastre dei display
- 4 misure, ciascuna in 2 colori
- **DATEC-CONTROL XS**
- Con/senza vano batteria per 2/3 batterie AA o 1 da 9 V avvitato, il coperchio del vano batteria è disponibile a scelta con arresto a scatto e/o con avvitamento, base come versione da scrivania
- **DATEC-CONTROL S**
- Con/senza vano batteria per 4 batterie AA o 1 da 9 V avvitato, il coperchio del vano batteria è disponibile a scelta con arresto a scatto e/o con avvitamento, base come versione da scrivania
- **DATEC-CONTROL M, L**
- Con/senza vano batteria sostituibile, fino a 5 batterie AA, con arresto a scatto; spazio per schede PCMCIA; base di carica con vano accumulatore come versione da scrivania/da parete
- Semplice trasmissione di dati e di corrente di carica, base e contatti come accessori
- Set supporto da parete per il deposito sicuro (accessorio)
- Protezioni che assorbono gli urti e riparano le superfici (accessorio), misure M e L con cinturino di supporto supplementare
- Superficie di comando incavata a protezione della tastiera a membrana
- Punti di fissaggio per schede e componenti di montaggio



# DATEC-CONTROL

## Esempi di applicazione

Rilevamento e trasmissione di dati mobile mediante modem, ISDN o a raggi infrarossi, metrologia e tecnica di regolazione, tecnica di comando digitale, industria meccanica e impiantistica, smart factory, industrie 4.0, ecc.



BIOFIT test unit for eye frequency



Hand-held measuring device for soil and water



Mobile balance display unit in a football stadium



Mobile HMI Terminal



Modular measuring system for universal use



Pretension tester for V-belts and toothed belts

## Modifiche specifiche del cliente

Che caratteristiche deve avere il vostro prodotto personalizzato? Su richiesta vi forniamo i contenitori e manopole pronti per il montaggio e con tutte le modifiche e le caratteristiche specifiche.

Opzioni prodotto per Datec-Control



Lavorazione meccanica



Verniciatura



Stampa



Marcatura laser



Pellicole decorative



Materiale speciale



Protezione CEM



Confezionamento / montaggio

# DATEC-CONTROL

## Versioni



**A9076107**  
DATEC-CONTROL XS, Vers. I  
ABS (UL 94 HB)  
off-white RAL 9002  
200x94x39,5mm  
IP 65 opt.



**A9076109**  
DATEC-CONTROL XS, Vers. I  
ABS (UL 94 HB)  
black RAL 9005  
200x94x39,5mm  
IP 65 opt.



**A9076157**  
SET: DATEC-CONTROL XS,  
Vers. I, station..  
ABS (UL 94 HB)  
off-white RAL 9002  
200x94mm  
IP 65 opt.



**A9076159**  
SET: DATEC-CONTROL XS,  
Vers. I, station..  
ABS (UL 94 HB)  
black RAL 9005  
200x94mm  
IP 65 opt.



**A9076207**  
DATEC-CONTROL XS, Vers. II  
ABS (UL 94 HB)  
off-white RAL 9002  
200x94x39,5mm  
IP 65 opt.



**A9076209**  
DATEC-CONTROL XS, Vers. II  
ABS (UL 94 HB)  
black RAL 9005  
200x94x40mm  
IP 65 opt.



**A9076257**  
SET: DATEC-CONTROL XS,  
Vers. II, station..  
ABS (UL 94 HB)  
off-white RAL 9002  
200x94mm  
IP 65 opt.



**A9076259**  
SET: DATEC-CONTROL XS,  
Vers. II, station..  
ABS (UL 94 HB)  
black RAL 9005  
200x94mm  
IP 65 opt.



**A9077107**  
DATEC-CONTROL S, Vers. I  
ABS (UL 94 HB)  
off-white RAL 9002  
228x117x47mm  
IP 65 opt.



**A9077109**  
DATEC-CONTROL S, Vers. I  
ABS (UL 94 HB)  
black RAL 9005  
228x117x47mm  
IP 65 opt.



**A9077157**  
SET: DATEC-CONTROL S, Vers.  
I, station..  
ABS (UL 94 HB)  
off-white RAL 9002  
228x117mm  
IP 65 opt.



**A9077159**  
SET: DATEC-CONTROL S, Vers.  
I, station..  
ABS (UL 94 HB)  
black RAL 9005  
228x117mm  
IP 65 opt.

# DATEC-CONTROL



**A9077207**  
DATEC-CONTROL S, Vers. II  
ABS (UL 94 HB)  
off-white RAL 9002  
228x117x47mm  
IP 65 opt.



**A9077209**  
DATEC-CONTROL S, Vers. II  
ABS (UL 94 HB)  
black RAL 9005  
228x117x47mm  
IP 65 opt.



**A9077257**  
SET: DATEC-CONTROL S, Vers. II, station..  
ABS (UL 94 HB)  
off-white RAL 9002  
228x117mm  
IP 65 opt.



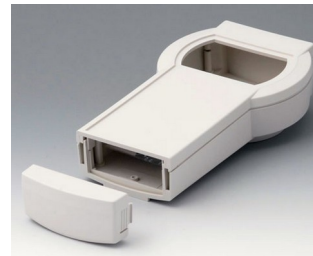
**A9077259**  
SET: DATEC-CONTROL S, Vers. II, station..  
ABS (UL 94 HB)  
black RAL 9005  
228x117mm  
IP 65 opt.



**A9078107**  
DATEC-CONTROL M, Vers. I  
ABS (UL 94 HB)  
off-white RAL 9002  
243x130x60mm  
IP 54 opt.



**A9078109**  
DATEC-CONTROL M, Vers. I  
ABS (UL 94 HB)  
black RAL 9005  
243x130x60mm  
IP 54 opt.



**A9078207**  
DATEC-CONTROL M, Vers. II  
ABS (UL 94 HB)  
off-white RAL 9002  
243x130x60mm  
IP 54 opt.



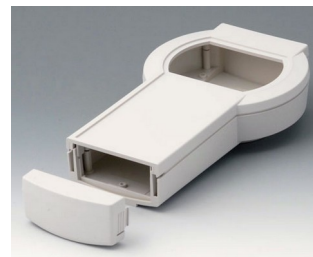
**A9078209**  
DATEC-CONTROL M, Vers. II  
ABS (UL 94 HB)  
black RAL 9005  
243x130x60mm  
IP 54 opt.



**A9079107**  
DATEC-CONTROL L, Vers. I  
ABS (UL 94 HB)  
off-white RAL 9002  
266x144x60mm  
IP 54 opt.



**A9079109**  
DATEC-CONTROL L, Vers. I  
ABS (UL 94 HB)  
black RAL 9005  
266x144x60mm  
IP 54 opt.



**A9079207**  
DATEC-CONTROL L, Vers. II  
ABS (UL 94 HB)  
off-white RAL 9002  
266x144x60mm  
IP 54 opt.



**A9079209**  
DATEC-CONTROL L, Vers. II  
ABS (UL 94 HB)  
black RAL 9005  
266x144x60mm  
IP 54 opt.



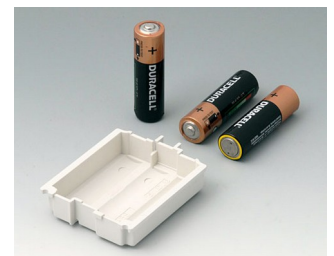
**A9176128**  
Battery compartment XS, 2 x AA  
or 1 x 9V  
ABS (UL 94 HB)



**A9176137**  
Station XS  
ABS (UL 94 HB)  
off-white RAL 9002



**A9176139**  
Station XS  
ABS (UL 94 HB)  
black RAL 9005



**A9176158**  
Battery compartment XS, 3 x AA  
ABS (UL 94 HB)  
off-white RAL 9002

# DATEC-CONTROL



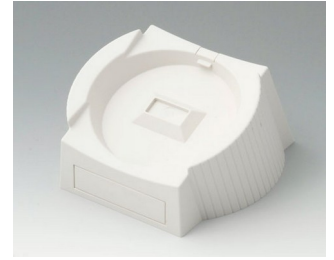
**A9177137**  
Station S  
ABS (UL 94 HB)  
off-white RAL 9002



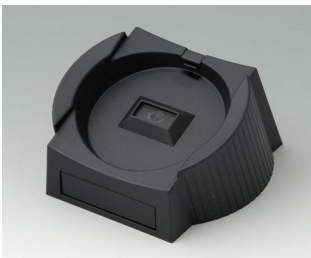
**A9177139**  
Station S  
ABS (UL 94 HB)  
black RAL 9005



**A9177310**  
Battery compartment, 1 x 9 V  
ABS (UL 94 HB)



**A9178137**  
Station, Vers. I  
ABS (UL 94 HB)  
off-white RAL 9002



**A9178139**  
Station, Vers. I  
ABS (UL 94 HB)  
black RAL 9005



**A9178167**  
Station, Vers. II  
ABS (UL 94 HB)  
off-white RAL 9002



**A9178169**  
Station, Vers. II  
ABS (UL 94 HB)  
black RAL 9005

## Accessory "battery"



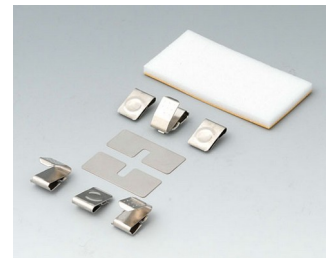
**A9160003**  
Plug-in contact, 1 x 9 V (PP3)



**A9174006**  
Set of battery clips, 1 x 9 V  
Steel  
tin-plated



**A9176007**  
Set of battery clips, 2 x AA  
Steel  
nickel-plated



**A9176008**  
Set of battery clips, 3 x AA  
Steel  
nickel-plated



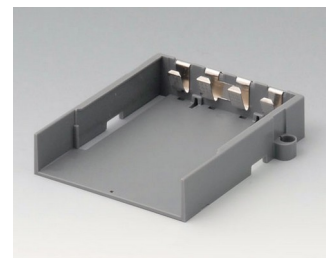
**A9176128**  
Battery compartment XS, 2 x AA  
or 1 x 9 V  
ABS (UL 94 HB)



**A9176158**  
Battery compartment XS, 3 x AA  
ABS (UL 94 HB)  
off-white RAL 9002



**A9177310**  
Battery compartment, 1 x 9 V  
ABS (UL 94 HB)



**A9178118**  
Battery compartment holder  
PC  
volcano

# DATEC-CONTROL



**A9178128**  
Battery compartment, M/L, 4 x AA  
PC  
volcano



**A9178158**  
Battery compartment, M/L, 5 x AA  
PC  
volcano



**A9178178**  
End plate for electronic area, Vers. I  
PC  
volcano



**A9178188**  
End plate for electronic area, Vers. II  
PC  
volcano



**A9178198**  
End plate for electronic area, Vers. III  
PC  
volcano



**A9250250**  
Battery spacer  
PE foam  
50x25x4mm



**A9345217**  
Set of battery compartment, 4 x AA  
ABS (UL 94 HB)  
off-white RAL 9002

## Accessory "station"



**A9176137**  
Station XS  
ABS (UL 94 HB)  
off-white RAL 9002



**A9176139**  
Station XS  
ABS (UL 94 HB)  
black RAL 9005



**A9177137**  
Station S  
ABS (UL 94 HB)  
off-white RAL 9002



**A9177139**  
Station S  
ABS (UL 94 HB)  
black RAL 9005



**A9178007**  
Contacts, male  
gold-plated



**A9178118**  
Battery compartment holder  
PC  
volcano



**A9178128**  
Battery compartment, M/L, 4 x AA  
PC  
volcano

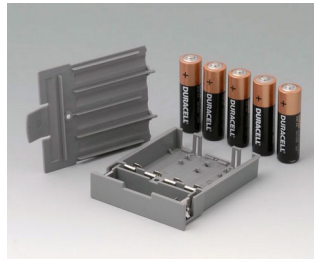


**A9178137**  
Station, Vers. I  
ABS (UL 94 HB)  
off-white RAL 9002

# DATEC-CONTROL



**A9178139**  
Station, Vers. I  
ABS (UL 94 HB)  
black RAL 9005



**A9178158**  
Battery compartment, M/L, 5 x  
AA  
PC  
volcano



**A9178167**  
Station, Vers. II  
ABS (UL 94 HB)  
off-white RAL 9002



**A9178169**  
Station, Vers. II  
ABS (UL 94 HB)  
black RAL 9005

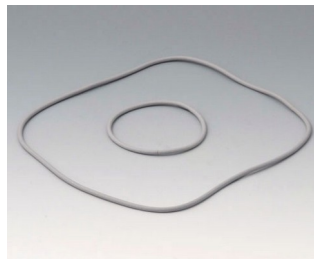


**A9199005**  
Strain relief  
PA 6  
volcano

## Accessory "protection"



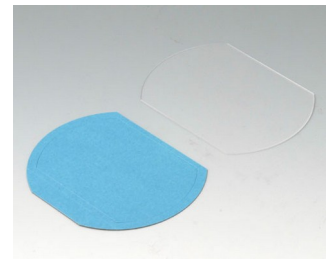
**A9176001**  
Display window XS  
Acrylic glass  
clear



**A9176006**  
Sealing kit XS



**A9176108**  
Protector XS  
SBS (TPE)  
volcano



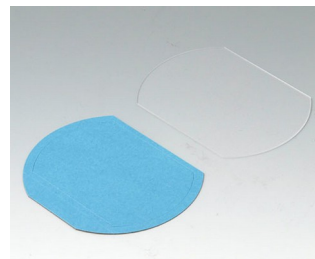
**A9177001**  
Display window S  
Acrylic glass  
clear



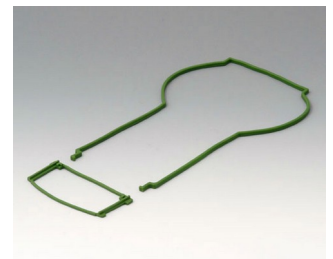
**A9177006**  
Sealing kit S



**A9177008**  
Protector S  
SBS (TPE)  
volcano



**A9178001**  
Display window M  
Acrylic glass  
clear



**A9178006**  
Sealing kit M

# DATEC-CONTROL



**A9178108**  
 Protector M  
 SBS (TPE)  
 volcano



**A9178208**  
 Protector M  
 SBS (TPE)  
 volcano



**A9179001**  
 Display window L  
 Acrylic glass  
 clear



**A9179006**  
 Sealing kit L



**A9179108**  
 Protector L  
 SBS (TPE)  
 volcano



**A9179208**  
 Protector L  
 SEBS (TPE)  
 volcano



**A9199005**  
 Strain relief  
 PA 6  
 volcano

## Accessory "wall/holder"



**A9226117**  
 Wall suspension element  
 ABS (UL 94 HB)  
 off-white RAL 9002



**A9226119**  
 Wall suspension element  
 ABS (UL 94 HB)  
 black RAL 9005



**A9226227**  
 Wall suspension element  
 ABS (UL 94 HB)  
 off-white RAL 9002



**A9226229**  
 Wall suspension element  
 ABS (UL 94 HB)  
 black RAL 9005



**A9226337**  
 Wall suspension element  
 ABS (UL 94 HB)  
 off-white RAL 9002



**A9226339**  
 Wall suspension element  
 ABS (UL 94 HB)  
 black RAL 9005

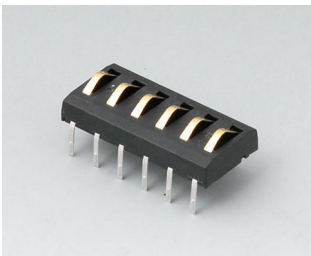
# DATEC-CONTROL

## Accessory "carrying"

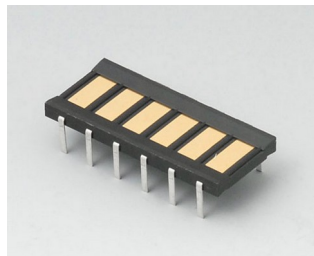


A9100002  
Ring eyelet  
PA 6  
volcano

## Accessory



A9178007  
Contacts, male  
gold-plated



A9178008  
Contacts, female  
gold-plated

Salvo modifiche tecniche. © OKW Gehäusesysteme, Buchen/Germania.