

## DISPOSITIVO ANTISTRAPPO

- Elevato grado di protezione IP 68 con anello di tenuta per raccordo filettato. Misure da M12 – M32.
- Una novità nel programma sono i passacavi a vite con compensatori di pressione da M12 a M20 integrati.
- Versione passacavi a vite quick fix: che sporgono solo di pochi millimetri all'interno del contenitore e non disturbano quindi altri componenti interni. Si caratterizzano inoltre per il montaggio pratico senza utensili speciali.
- Il dispositivo antistrappo protegge le linee elettriche da sollecitazioni meccaniche.



### Versioni



**A9166004**  
Set of pull-relief  
PA 6  
volcano



**A9199005**  
Strain relief  
PA 6  
volcano



**C2312137**  
Cable grommet  
EPDM  
light grey RAL 7035

IP 67



**C2312418**  
Cable gland M12x1.5  
PA 6  
silver grey RAL 7001

IP 68

# PASSACAVI, PASSACAVI A VITE,

## DISPOSITIVO ANTISTRAPPO



**C2312419**  
Cable gland M12x1.5  
PA 6  
black RAL 9005

IP 68



**C2312518**  
Cable gland M12x1.5, bending  
protection  
PA 6  
silver grey RAL 7001

IP 68



**C2312917**  
Cable gland M12x1.5, pressure  
compensation  
PA 6 (UL 94 V-0)  
light grey RAL 7035

IP 68



**C2312919**  
Cable gland M12x1.5, pressure  
compensation  
PA 6 (UL 94 V-0)  
black RAL 9005

IP 68



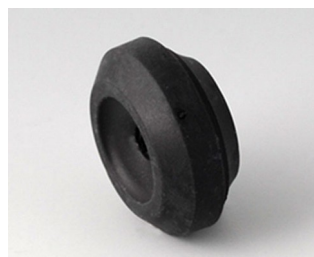
**C2316137**  
Cable grommet  
EPDM  
light grey RAL 7035

IP 67



**C2316147**  
Cable grommet  
TPE  
light grey RAL 7035

IP 67



**C2316159**  
Cable grommet  
TPE (UL 94 V-0)  
black RAL 9005

IP 67



**C2316418**  
Cable gland M16x1.5  
PA 6  
silver grey RAL 7001

IP 68



**C2316419**  
Cable gland M16x1.5  
PA 6  
black RAL 9005

IP 68



**C2316518**  
Cable gland M16x1.5, bending  
protection  
PA 6  
silver grey RAL 7001

IP 68



**C2316618**  
Cable gland M16x1.5  
PA 6  
silver grey RAL 7001

IP 68



**C2316717**  
Quick fix cable gland, M16  
PA 6  
light grey RAL 7035

IP 68

## DISPOSITIVO ANTISTRAPPO



**C2316719**  
Quick fix cable gland, M16  
PA 6  
black RAL 9005

IP 68



**C2316917**  
Cable gland M16x1.5, pressure  
compensation  
PA 6 (UL 94 V-0)  
light grey RAL 7035

IP 68



**C2316919**  
Cable gland M16x1.5, pressure  
compensation  
PA 6 (UL 94 V-0)  
black RAL 9005

IP 68



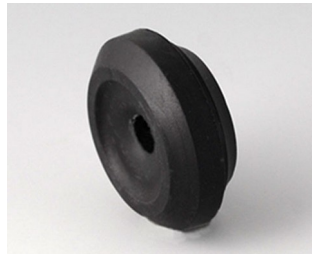
**C2320137**  
Cable grommet  
EPDM  
light grey RAL 7035

IP 67



**C2320147**  
Cable grommet  
TPE  
light grey RAL 7035

IP 67



**C2320159**  
Cable grommet  
TPE (UL 94 V-0)  
black RAL 9005

IP 67



**C2320418**  
Cable gland M20x1.5  
PA 6  
silver grey RAL 7001

IP 68



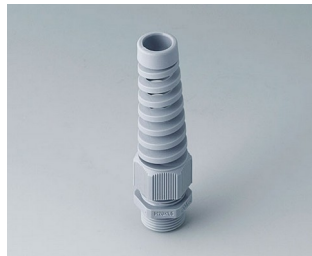
**C2320419**  
Cable gland M20x1.5  
PA 6  
black RAL 9005

IP 68



**C2320428**  
Cable gland M20x1.5  
PA 6  
silver grey RAL 7001

IP 68



**C2320518**  
Cable gland M20x1.5, bending  
protection  
PA 6  
silver grey RAL 7001

IP 68



**C2320528**  
Cable gland M20x1.5, bending  
protection  
PA 6  
silver grey RAL 7001

IP 68



**C2320717**  
Quick fix cable gland, M20  
PA 6  
light grey RAL 7035

IP 68

## DISPOSITIVO ANTISTRAPPO



**C2320719**  
Quick fix cable gland, M20  
PA 6  
black RAL 9005  
IP 68



**C2320917**  
Cable gland M20x1.5, pressure  
compensation  
PA 6 (UL 94 V-0)  
light grey RAL 7035  
IP 68



**C2320919**  
Cable gland M20x1.5, pressure  
compensation  
PA 6 (UL 94 V-0)  
black RAL 9005  
IP 68



**C2353849**  
Flexible cable grommet Ø 5,3  
black

### Accessory



**C2312117**  
Counternut M12x1.5  
PA 6  
light grey RAL 7035



**C2312126**  
Sealing ring for external thread  
M12x1.5  
PE  
natural-coloured



**C2316117**  
Counternut M16x1.5  
PA 6  
light grey RAL 7035



**C2316126**  
Sealing ring for external thread  
M16x1.5  
PE  
natural-coloured



**C2320117**  
Counternut M20x1.5  
PA 6  
light grey RAL 7035



**C2320126**  
Sealing ring for external thread  
M20x1.5  
PE  
natural-coloured