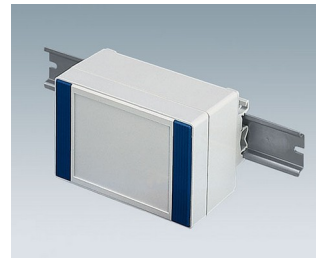
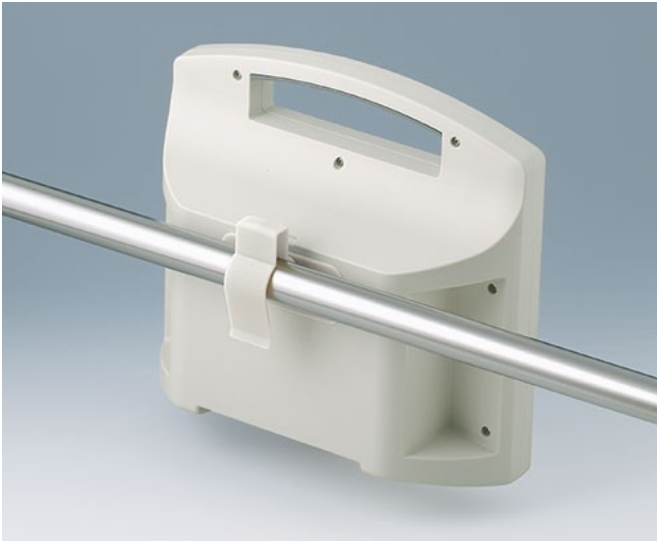


SUPPORTI, FISSAGGI SU BINARI/SU TUBI

OKW

GEHÄUSE
SYSTEME

- Elemento di fissaggio per guide DIN EN 60715 TH35 e G32
- Fermaglio di bloccaggio per tubolari fino a \varnothing 32 mm / guide per apparecchi secondo DIN EN ISO 19054
- Staffa di montaggio per palo/traliccio e altre applicazioni



Modifiche specifiche del cliente

Che caratteristiche deve avere il vostro prodotto personalizzato? Su richiesta vi forniamo i contenitori e manopole pronti per il montaggio e con tutte le modifiche e le caratteristiche specifiche.

Opzioni prodotto per Supporti, fissaggi su binari/su tubi



Lavorazione
meccanica



Stampa



Marcatura laser



Confezionamento /
montaggio

SUPPORTI, FISSAGGI SU BINARI/SU TUBI

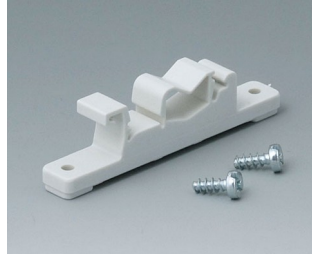
OKW

GEHÄUSE SYSTEME

Versioni



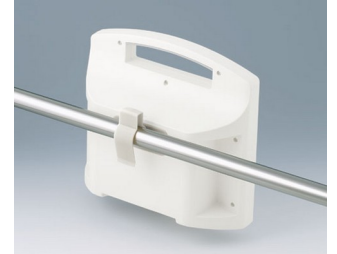
A9325018
Pole/mast mounting bracket
ASA (UL 94 HB)
anthracite grey RAL 7016
100x100x20mm



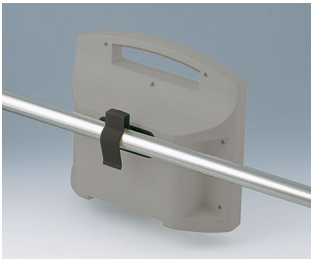
B1300017
Fastening element for DIN-Rails
PA 6
off-white RAL 9002



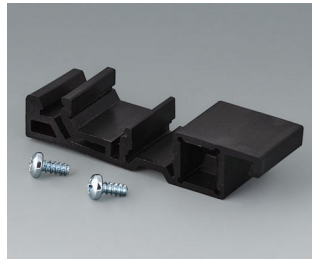
B1300019
Fastening element for DIN-Rails
PA 6
black RAL 9005



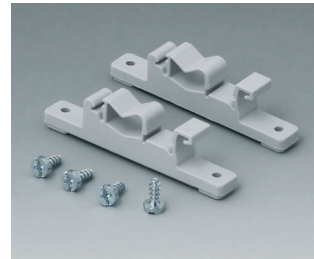
B4308237
Holding clamps
PA 6
off-white RAL 9002



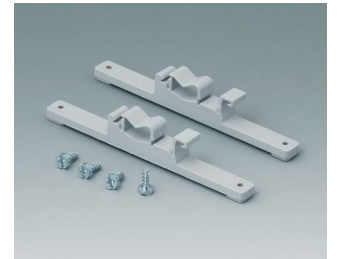
B4308238
Holding clamps
PA 6
lava



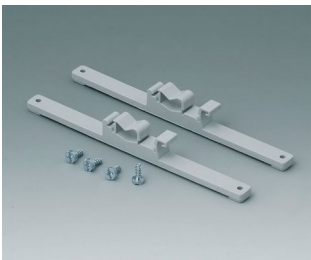
B6811751
DIN rail adapter
PA 66 (UL 94 V-0)
black RAL 9005



C2201088
Fastening elements to DIN-Rails
PA 6
light grey RAL 7035



C2203128
Fastening elements to DIN-Rails
PA 6
light grey RAL 7035



C2204168
Fastening elements to DIN-Rails
PA 6
light grey RAL 7035

Salvo modifiche tecniche. © OKW Gehäusesysteme, Buchen/Germania.